

Concho Suites

133 W. Concho Ave, San Angelo, Texas 76903

HalfmannRealty.com ; (325)655-1278



We are conveniently located near historic Downtown San Angelo. Several office suites offer scenic views of the Concho River.

Suites range in size from 916 sq.ft. to 8,075 sq.ft.



Amenities Included Are:

- ❖ On-site Property Management
- ❖ On-site Parking
- ❖ 1-5 Year Leases
- ❖ Janitorial Services
- ❖ Utilities included
(Except Telephone/Internet)

SUITE 203



Suite 203

~2,064.63 sf. - \$2,000/Month

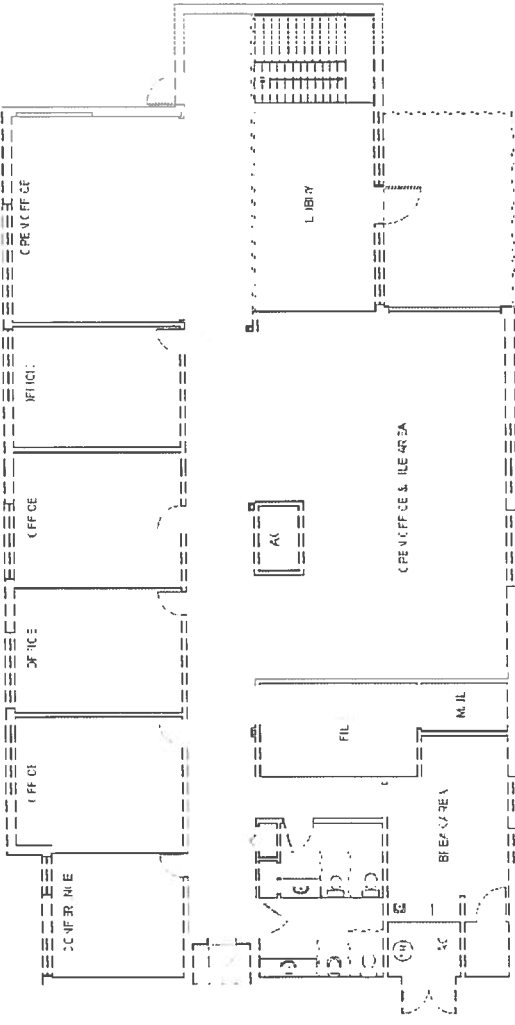
*This rate includes all utilities (except phone and internet) including janitorial services.

~Suite 203 is located on the 2nd floor.

~This suite features 4 offices, a boardroom, a kitchenette, a private bathroom, and an open office area ready for cubicles.

Suite 301

Suite 301



Suite 301

- ~ 8,075.33 sf. - \$7,400/Month
- *This rate does not include electricity, phone, or internet.
- *This rate includes water and janitorial.

~Suite 301 is 2 story building overlooking the Concho River.

~This suite features 7 offices, 2 conference rooms, two break rooms, three open office areas ready for cubicles, a lobby, and 2 file rooms.

Suite 301

