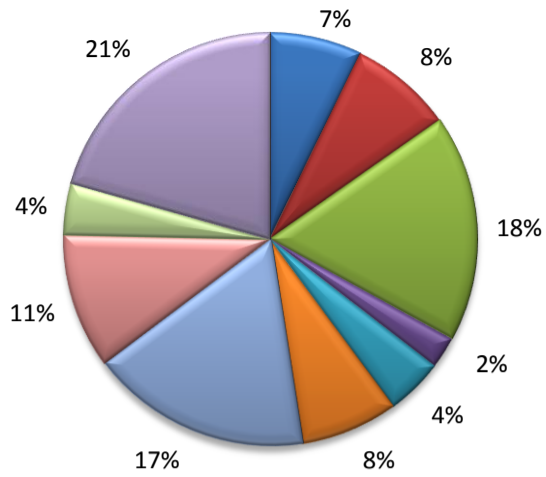


(Irlon, Tom Green)

Industry Composition

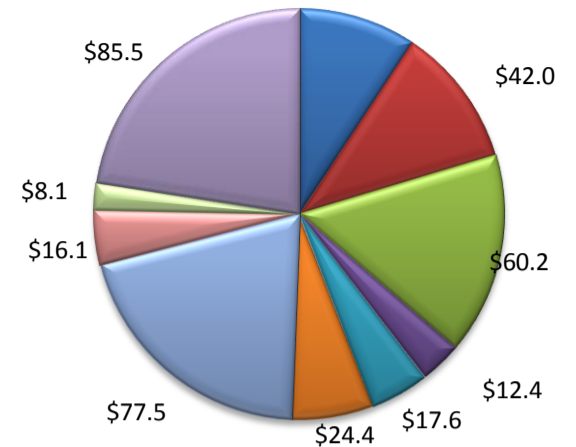


- Mining, Logging, and Construction
- Manufacturing
- Trade, Transportation, and Utilities
- Information
- Financial Activities
- Professional and Business Services
- Education and Health Services
- Leisure and Hospitality
- Other Services
- Government

Wages by Industry (in millions)

3rd Quarter 2010

\$35.2



Employment by Industry

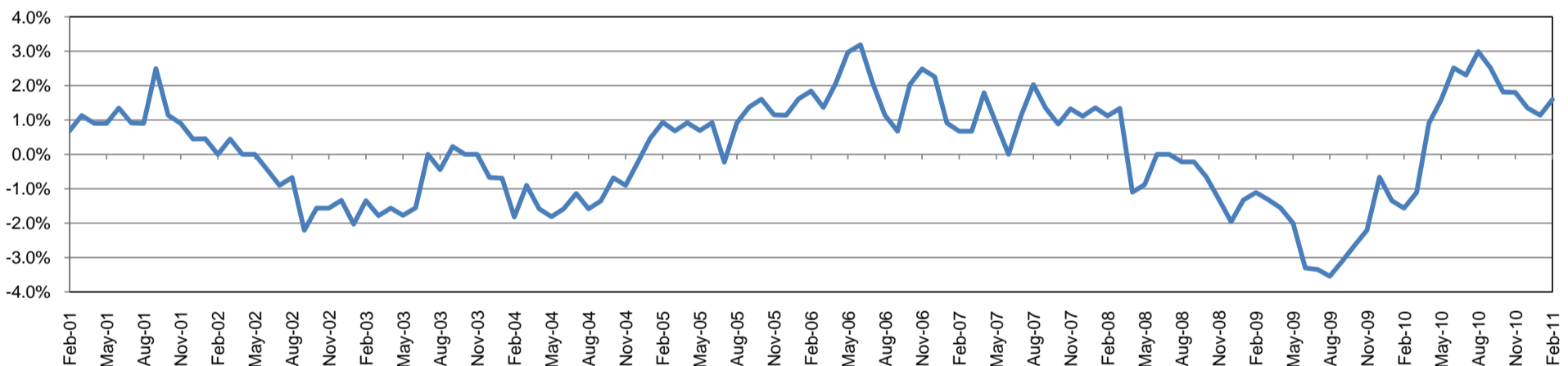
	Feb-11	Jan-11	Feb-10	Monthly Change		Annual Change	
				Actual	%	Actual	%
Total Nonfarm	44,600	44,300	43,900	300	0.7%	700	1.6%
Mining, Logging, and Construction	3,200	3,200	2,900	0	0.0%	300	10.3%
Manufacturing	3,600	3,600	3,400	0	0.0%	200	5.9%
Trade, Transportation, and Utilities	7,900	7,900	7,800	0	0.0%	100	1.3%
Information	1,100	1,100	1,200	0	0.0%	-100	-8.3%
Financial Activities	2,000	2,000	2,100	0	0.0%	-100	-4.8%
Professional and Business Services	3,400	3,300	3,300	100	3.0%	100	3.0%
Education and Health Services	7,700	7,600	7,600	100	1.3%	100	1.3%
Leisure and Hospitality	4,700	4,600	4,600	100	2.2%	100	2.2%
Other Services	1,800	1,800	1,800	0	0.0%	0	0.0%
Government	9,200	9,200	9,200	0	0.0%	0	0.0%

Industry Size Class

September 2010

Size Class	Employees per firm	Number of Firms	Employment in Size Class	% Total Employment
9	1000+	2	3,984	8.9%
8	500-999	11	8,630	19.3%
7	250-499	10	3,292	7.4%
6	100-249	40	5,944	13.3%
5	50-99	83	5,862	13.1%
4	20-49	244	7,351	16.4%
3	10-19	327	4,322	9.7%
2	5-9	432	2,851	6.4%
1	1-4	1,179	2,489	5.6%
0	0	166	0	0.0%
Total		2,494	44,725	100.0%

Annual Growth Rate for Total Nonagricultural Employment

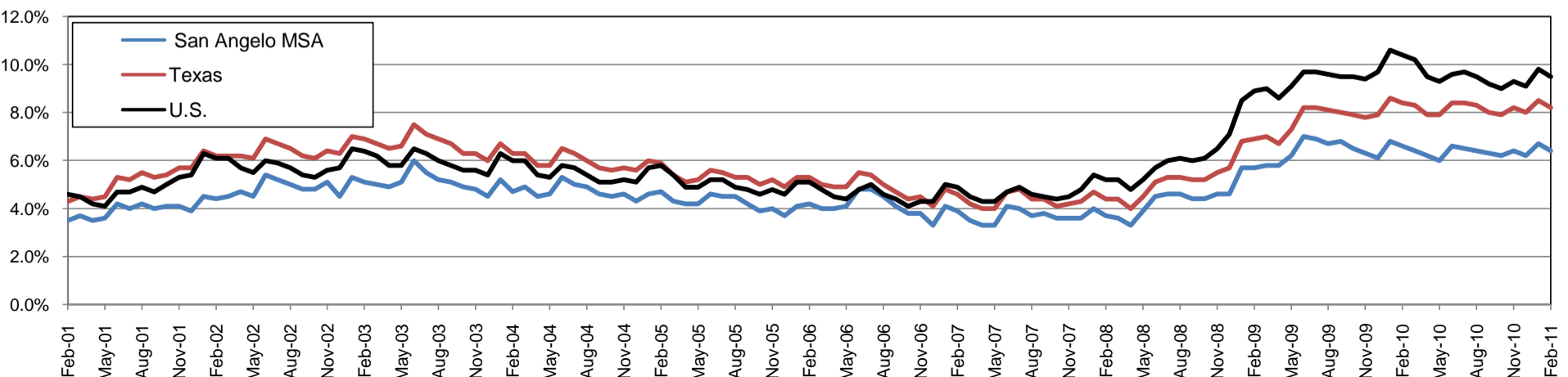


Unemployment Information

(all estimates in thousands)

	San Angelo MSA				Texas (Actual)				United States (Actual)			
	C.L.F.	Emp.	Unemp.	Rate	C.L.F.	Emp.	Unemp.	Rate	C.L.F.	Emp.	Unemp.	Rate
Feb-11	54.9	51.4	3.5	6.4	12,152.4	11,159.9	992.5	8.2	152,635.0	138,093.0	14,542.0	9.5
Jan-11	55.0	51.3	3.7	6.7	12,150.6	11,115.1	1,035.5	8.5	152,536.0	137,599.0	14,937.0	9.8
Feb-10	54.4	50.8	3.6	6.6	12,023.9	11,016.1	1,007.8	8.4	153,194.0	137,203.0	15,991.0	10.4

Historical Unemployment Rates

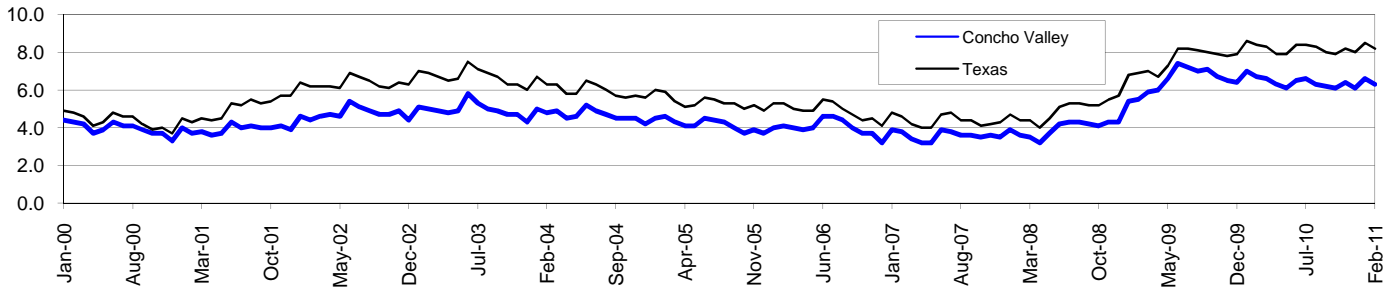


Concho Valley Workforce Development Area*

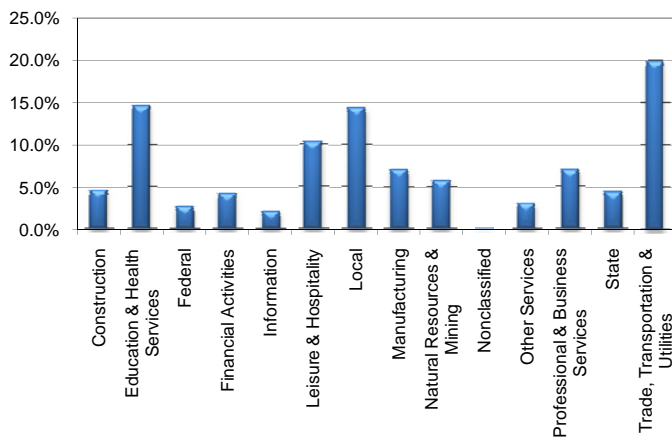
February 2011

Concho Valley WDA					Texas				
	CLF	Employed	Unemployed	Rate		CLF	Employed	Unemployed	Rate
Feb-11	76,335	71,539	4,796	6.3	Feb-11	12,152,422	11,159,899	992,523	8.2
Jan-11	76,665	71,617	5,048	6.6	Jan-11	12,150,630	11,115,114	1,035,516	8.5
Feb-10	76,169	71,087	5,082	6.7	Feb-10	12,023,918	11,016,106	1,007,812	8.4

Historical Unemployment Rates



Concho Valley WDA Industry Composition 3rd Quarter 2010



Total WDA Claims

	Feb-11	Jan-11	Feb-10	OTY
Initial	250	351	298	-48
Continued	1,076	1,366	1,717	-641
Continued Claims for the Week of the 12th				
Continued	542	572	715	-173

Texas Unemployment Insurance Claims Filed

	Feb-11	Jan-11	Feb-10	OTY
Initial	69,540	98,517	86,282	-16,742
Continued	795,729	960,319	1,020,691	-224,962
Continued Claims for the Week of the 12th				
Continued	200,536	208,853	249,038	-48,502

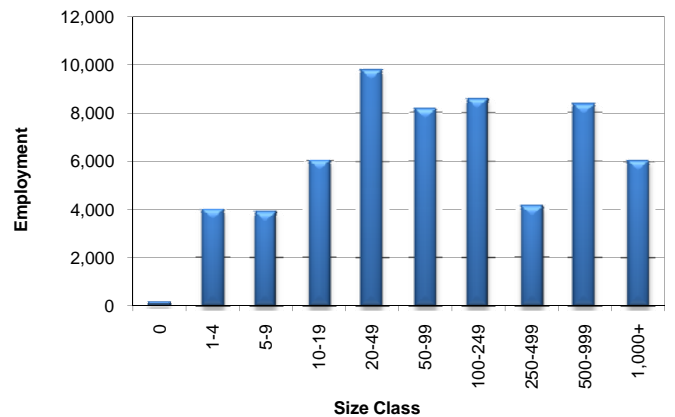
Concho Valley WDA Average Weekly Wage

	Concho Valley	WDA Qtr. Chg.	Texas
3rd Quarter 2010	\$665.01	\$18.98	\$875.52
2nd Quarter 2010	\$646.03	WDA OTY Chg.	\$863.80
3rd Quarter 2009	\$628.24	\$36.77	\$844.49

NAICS Covered Employment Quarterly Data 3rd Quarter 2010

SUPER SECTOR	Employment	Change	
		Quarter	Year
Construction	2,697	15	16
Education & Health Services	8,659	39	176
Federal	1,622	46	61
Financial Activities	2,522	-17	-146
Information	1,253	-29	-119
Leisure & Hospitality	6,040	-43	56
Local	8,475	-595	-40
Manufacturing	4,184	125	261
Natural Resources & Mining	3,390	76	76
Nonclassified	44	3	24
Other Services	1,807	2	4
Professional & Business Services	4,083	-50	312
State	2,531	-82	28
Trade, Transportation & Utilities	11,720	217	376
TOTAL	59,027	-293	1,085

Size Class Employment Composition 3rd Quarter 2010



*Counties in WDA: Coke, Concho, Crockett, Irion, Kimble, McCulloch, Mason, Menard, Reagan, Schleicher, Sterling, Sutton, & Tom Green

Texas Nonagricultural Wage & Salary Employment (Seasonally Adjusted) 1
 Texas & U.S. Unemployment Rates 2
 Texas Nonagricultural Wage & Salary Employment (Not Seasonally Adjusted) 3
 MSA Nonagricultural Wage & Salary Employment (Not Seasonally Adjusted) 5
 Highlights of the Texas Labor Force 8
 County Unemployment Rates 9
 City & WDA Unemployment Rates 10
 Texas Hours and Earnings 10
 Glossary 11
 "Happenings Around the State" 11
 Indicators 12

TEXAS

LABOR MARKET REVIEW

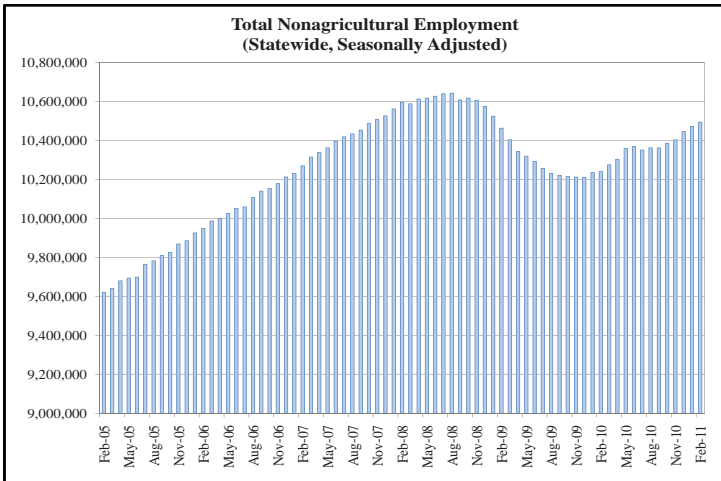
MARCH 2011

Texas Nonagricultural Wage and Salary Employment (Seasonally Adjusted)

Total Nonagricultural Employment, with only two over-the-month losses in the past year, was up for the fifth consecutive month, adding 22,700 jobs in February, or 0.2 percent. The payroll series was estimated to be at 10,493,700 jobs, a level not seen since January 2009. Six of the eleven major industries grew over the month, with over half of the job gains coming from Professional and Business Services. Total Nonagricultural Employment rose by 254,200 jobs since February 2010. The annual growth rate of 2.5 percent was the highest growth rate recorded since April 2008.

beginning in November 2008, the rate has now been positive for eight consecutive months.

Mining and Logging, which added 5,400 jobs in February, has not experienced a monthly loss of employment since October 2009. The over-the-month increase was six times that of the five-year-average pace of 900 jobs. The annual growth rate climbed from -11.8 percent in February 2010 to 15.2 percent in February 2011 and has been positive for the past 10 months. A total of 29,800 positions were added in Mining and Logging since February 2010.



Leisure and Hospitality employment increased for the sixth time in the past seven months with the addition of 3,400 jobs in February. Within this industry, Arts, Entertainment, and Recreation along with Accommodations and Food Services posted gains of 1,900 jobs and 1,500 jobs, respectively. Annual growth in Leisure and Hospitality climbed to 22,200 jobs in February. The resulting annual growth rate of 2.2 percent was the highest seen in the industry since July 2008.

Education and Health Services employment edged up by 2,300 positions in February after a revised rise of 9,200 jobs in January. The resulting monthly growth rate of 0.2 percent nearly mirrored the 0.3 percent growth seen in this industry nationwide in February. Employment in Education and Health Services has averaged a gain of 3,300 jobs for February over the prior five years. Over-the-year expansion in this industry posted an increase of 47,100 jobs for an annual growth rate of 3.4 percent.

Professional and Business Services employment increased by 14,500 jobs in February, bringing the estimated employment level to 1,302,900 jobs. Employment in this industry grew in 10 of the last 12 months. Since last February, Professional and Business Services gained 51,200 jobs for an annual growth rate of 4.1 percent. Annual employment change in this industry has been positive every month since April 2010. Some of the businesses that make up this major industry are temporary help services and employment placement agencies, along with offices of lawyers and tax preparation services. Janitorial services, landscaping services, and travel agencies are also a part of this industry.

Employment in Government expanded by 100 jobs in February, following a revised gain of 5,600 positions in January. This was the fifth consecutive over-the-month growth seen in this industry and the eighth monthly expansion in the past 12 months. Annual job growth in Government reached 25,800 positions in February for an annual growth rate of 1.4 percent, which slightly trailed the average annual growth rate in February for the prior ten years of 1.8 percent.

Employment in Trade, Transportation, and Utilities rose for the third consecutive month, adding 7,500 jobs in February. During 2010, this industry only experienced two monthly losses. In the past 12 months, Trade, Transportation, and Utilities added 42,700 jobs. The annual growth rate in February of 2.1 percent is the highest rate since April 2008. After 20 consecutive months of negative annual growth rates

IMPORTANT NOTICE:

Beginning with the preliminary estimates for March 2011, the Bureau of Labor Statistics will produce Current Employment Statistics estimates for all State Workforce Agencies.

Please see page 12 for additional information.

TEXAS NONAGRICULTURAL WAGE AND SALARY EMPLOYMENT
SEASONALLY ADJUSTED⁺

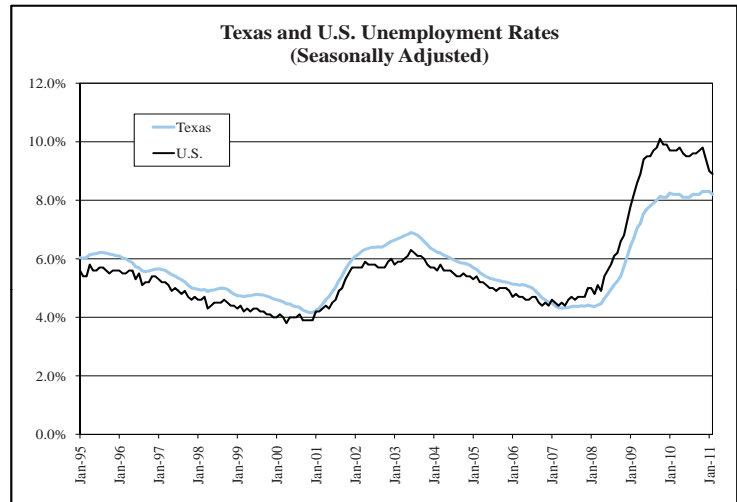
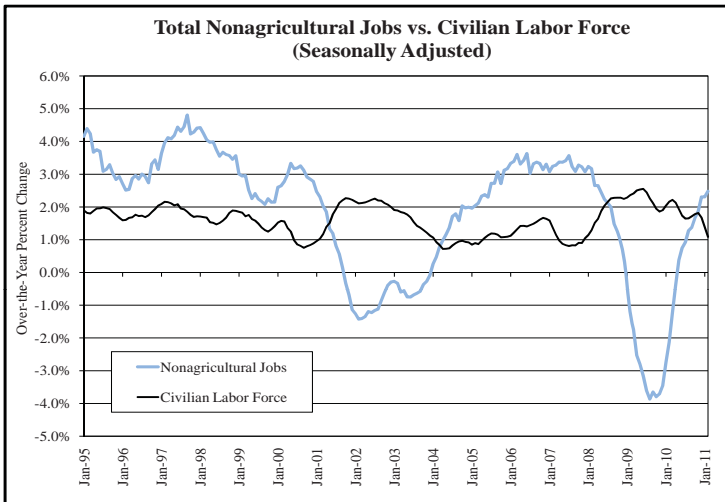
INDUSTRY TITLE	Feb. 2011*	Jan. 2011	Feb. 2010	Jan. '11 to Feb. '11		Feb. '10 to Feb. '11	
				Absolute Change	Percent Change	Absolute Change	Percent Change
TOTAL NONAG. W&S EMPLOYMENT	10,493,700	10,471,000	10,239,500	22,700	0.2	254,200	2.5
TOTAL NONGOVERNMENT**	8,627,200	8,604,600	8,398,800	22,600	0.3	228,400	2.7
GOODS-PRODUCING							
Mining & Logging	225,900	220,500	196,100	5,400	2.4	29,800	15.2
Construction	592,100	596,400	560,600	-4,300	-0.7	31,500	5.6
Manufacturing	814,800	816,300	806,900	-1,500	-0.2	7,900	1.0
SERVICE-PROVIDING							
Trade, Transportation, & Utilities	2,078,500	2,071,000	2,035,800	7,500	0.4	42,700	2.1
Information	189,500	191,200	196,700	-1,700	-0.9	-7,200	-3.7
Financial Activities	619,900	622,100	623,100	-2,200	-0.4	-3,200	-0.5
Professional & Business Services	1,302,900	1,288,400	1,251,700	14,500	1.1	51,200	4.1
Education & Health Services	1,418,100	1,415,800	1,371,000	2,300	0.2	47,100	3.4
Leisure & Hospitality	1,020,300	1,016,900	998,100	3,400	0.3	22,200	2.2
Other Services	365,200	366,000	358,800	-800	-0.2	6,400	1.8
Government	1,866,500	1,866,400	1,840,700	100	0.0	25,800	1.4

Note: The number of nonagricultural jobs in Texas is without reference to place of residence of workers. Total Nonagricultural employment is additive by summing the individual sectors.

*Estimates for the current month are preliminary. All estimates are subject to revision.

**Total Nongovernment number is derived by subtracting the Government estimate from the Total Nonagricultural estimate.

+All elements of seasonality are factored out to achieve an estimate which reflects the basic underlying trend.



TEXAS AND U.S. CIVILIAN LABOR FORCE ESTIMATES

		TEXAS*				UNITED STATES**			
		CLF	Employment	Unemp.	Rate	CLF	Employment	Unemp.	Rate
Not Seasonally Adjusted									
February	2011	12,152,400	11,159,900	992,500	8.2	152,635,000	138,093,000	14,542,000	9.5
January	2011	12,150,600	11,115,100	1,035,500	8.5	152,536,000	137,599,000	14,937,000	9.8
February	2010	12,023,900	11,016,100	1,007,800	8.4	153,194,000	137,203,000	15,991,000	10.4
Seasonally Adjusted									
February	2011	12,214,200	11,212,400	1,001,800	8.2	153,246,000	139,573,000	13,673,000	8.9
January	2011	12,212,200	11,201,600	1,010,600	8.3	153,186,000	139,323,000	13,863,000	9.0
February	2010	12,082,700	11,090,900	991,800	8.2	153,558,000	138,698,000	14,860,000	9.7

Note: Only the actual series estimates for Texas and the U.S. are comparable to sub-state estimates. All estimates are subject to revision.

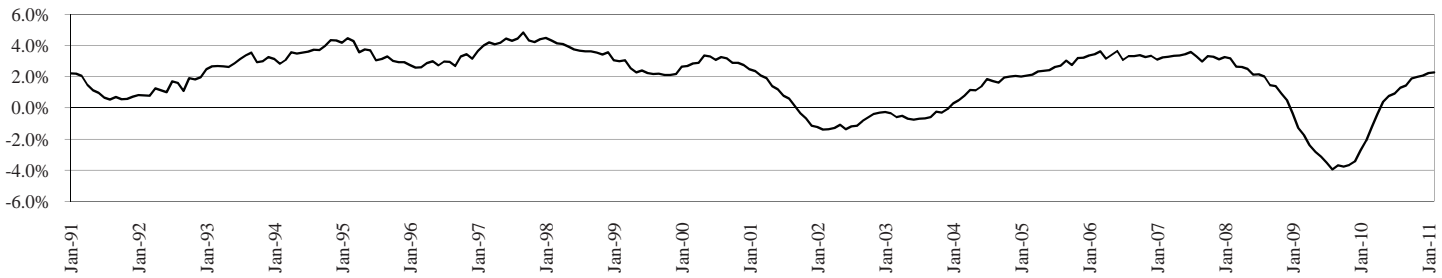
In seasonally adjusted estimates, all elements of seasonality are factored out to achieve an estimate which reflects the basic underlying trend.

*Source - Labor Market and Career Information Department, Texas Workforce Commission (model-based methodology)

**Source - Bureau of Labor Statistics, U.S. Department of Labor (Current Population Survey)

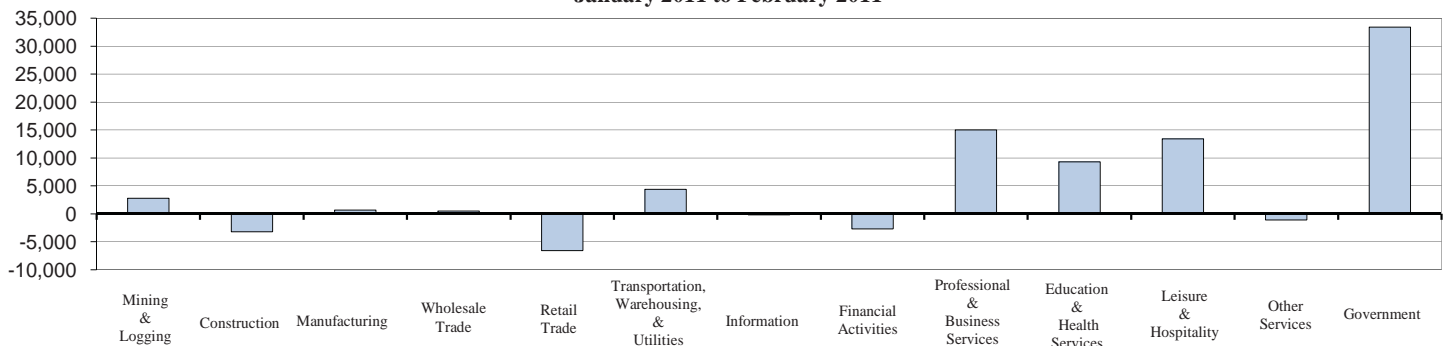
Texas Nonagricultural Wage and Salary Employment (Not Seasonally Adjusted)

Annual Growth Rates



	Feb. '11*	Jan. '11	Feb. '10	Jan. '11 to Feb. '11 Change	% Change	Feb. '10 to Feb. '11 Change	% Change
TOTAL NONFARM	10,408,300	10,342,600	10,178,300	65,700	0.6%	230,000	2.3%
TOTAL PRIVATE (total nonfarm less government)	8,515,500	8,483,200	8,309,500	32,300	0.4%	206,000	2.5%
GOODS PRODUCING	1,609,100	1,608,800	1,552,100	300	0.0%	57,000	3.7%
Mining and Logging (NAICS 21, 1133)	222,700	219,900	195,400	2,800	1.3%	27,300	14.0%
<i>Oil and Gas Extraction (NAICS 211)</i>	83,700	83,200	80,500	500	0.6%	3,200	4.0%
<i>Support Activities for Mining (NAICS 213)</i>	125,700	124,100	104,200	1,600	1.3%	21,500	20.6%
Construction (NAICS 23)	574,700	577,900	552,400	-3,200	-0.6%	22,300	4.0%
<i>Construction of Buildings (NAICS 236)</i>	134,600	136,400	129,800	-1,800	-1.3%	4,800	3.7%
<i>Heavy and Civil Engineering Construction (NAICS 237)</i>	113,100	114,700	106,500	-1,600	-1.4%	6,600	6.2%
<i>Specialty Trade Contractors (NAICS 238)</i>	327,000	326,800	316,100	200	0.1%	10,900	3.5%
Manufacturing (NAICS 31-33)	811,700	811,000	804,300	700	0.1%	7,400	0.9%
Durable Goods	523,900	521,900	508,200	2,000	0.4%	15,700	3.1%
<i>Wood Product Manufacturing (NAICS 321)</i>	18,800	18,700	19,200	100	0.5%	-400	-2.1%
<i>Nonmetallic Mineral Product Manufacturing (NAICS 327)</i>	31,800	31,600	33,100	200	0.6%	-1,300	-3.9%
<i>Primary Metal Manufacturing (NAICS 331)</i>	20,400	20,300	19,100	100	0.5%	1,300	6.8%
<i>Fabricated Metal Product Manufacturing (NAICS 332)</i>	115,500	115,300	109,600	200	0.2%	5,900	5.4%
<i>Machinery Manufacturing (NAICS 333)</i>	90,100	89,000	83,500	1,100	1.2%	6,600	7.9%
<i>Computer and Electronic Product Manufacturing (NAICS 334)</i>	96,400	96,600	94,600	-200	-0.2%	1,800	1.9%
<i>Electric Equipment, Appliance, and Component Mfg (NAICS 335)</i>	16,500	16,500	16,800	0	0.0%	-300	-1.8%
<i>Transportation Equipment Manufacturing (NAICS 336)</i>	86,400	85,800	82,600	600	0.7%	3,800	4.6%
<i>Furniture and Related Product Manufacturing (NAICS 337)</i>	21,400	21,500	22,600	-100	-0.5%	-1,200	-5.3%
<i>Miscellaneous Manufacturing (NAICS 339)</i>	26,600	26,600	27,100	0	0.0%	-500	-1.9%
Nondurable Goods	287,800	289,100	296,100	-1,300	-0.5%	-8,300	-2.8%
<i>Food Manufacturing (NAICS 311)</i>	87,700	87,800	88,200	-100	-0.1%	-500	-0.6%
<i>Beverage and Tobacco Product Manufacturing (NAICS 312)</i>	10,900	10,800	11,100	100	0.9%	-200	-1.8%
<i>Paper Manufacturing (NAICS 322)</i>	17,400	17,300	17,600	100	0.6%	-200	-1.1%
<i>Printing and Related Support Manufacturing (NAICS 323)</i>	27,400	27,300	28,500	100	0.4%	-1,100	-3.9%
<i>Petroleum and Coal Products Manufacturing (NAICS 324)</i>	24,000	23,700	25,000	300	1.3%	-1,000	-4.0%
<i>Chemical Manufacturing (NAICS 325)</i>	70,000	70,100	71,000	-100	-0.1%	-1,000	-1.4%
<i>Plastics and Rubber Manufacturing (NAICS 326)</i>	36,200	36,000	36,800	200	0.6%	-600	-1.6%

Statewide Over-the-Month Change (Not Seasonally Adjusted)
January 2011 to February 2011



*Estimates for the current month are preliminary. All estimates are subject to revision. The number of nonagricultural jobs in Texas is without reference to place of residence of workers. Estimates of the TWC are in cooperation with the Bureau of Labor Statistics, U.S. Department of Labor.

Texas Nonagricultural Wage and Salary Employment (Not Seasonally Adjusted)

	Feb. '11*	Jan. '11	Feb. '10	Jan. '11 to Feb. '11 Change	% Change	Feb. '10 to Feb. '11 Change	% Change
SERVICE PROVIDING	8,799,200	8,733,800	8,626,200	65,400	0.8%	173,000	2.0%
Private Service Providing	6,906,400	6,874,400	6,757,400	32,000	0.5%	149,000	2.2%
Trade, Transportation, and Utilities (NAICS 42,44,45,48,49,22)	2,050,200	2,051,900	2,009,100	-1,700	-0.1%	41,100	2.1%
Wholesale Trade (NAICS 42)	498,200	497,700	489,600	500	0.1%	8,600	1.8%
<i>Merchant Wholesalers, Durable Goods (NAICS 423)</i>	<i>279,700</i>	<i>282,000</i>	<i>276,100</i>	<i>-2,300</i>	<i>-0.8%</i>	<i>3,600</i>	<i>1.3%</i>
<i>Merchant Wholesalers, Nondurable Goods (NAICS 424)</i>	<i>155,100</i>	<i>154,000</i>	<i>153,400</i>	<i>1,100</i>	<i>0.7%</i>	<i>1,700</i>	<i>1.1%</i>
Retail Trade (NAICS 44-45)	1,130,100	1,136,700	1,108,900	-6,600	-0.6%	21,200	1.9%
<i>Motor Vehicle and Parts Dealers (NAICS 441)</i>	<i>145,400</i>	<i>145,000</i>	<i>137,900</i>	<i>400</i>	<i>0.3%</i>	<i>7,500</i>	<i>5.4%</i>
<i>Furniture and Home Furnishings Stores (NAICS 442)</i>	<i>36,200</i>	<i>36,800</i>	<i>36,900</i>	<i>-600</i>	<i>-1.6%</i>	<i>-700</i>	<i>-1.9%</i>
<i>Electronics and Appliance Stores (NAICS 443)</i>	<i>42,700</i>	<i>43,800</i>	<i>42,100</i>	<i>-1,100</i>	<i>-2.5%</i>	<i>600</i>	<i>1.4%</i>
<i>Building Material and Garden Equipment and Supplies (NAICS 444)</i>	<i>88,400</i>	<i>86,000</i>	<i>86,000</i>	<i>2,400</i>	<i>2.8%</i>	<i>2,400</i>	<i>2.8%</i>
<i>Food and Beverage Stores (NAICS 445)</i>	<i>204,200</i>	<i>204,400</i>	<i>202,200</i>	<i>-200</i>	<i>-0.1%</i>	<i>2,000</i>	<i>1.0%</i>
<i>Health and Personal Care Stores (NAICS 446)</i>	<i>66,800</i>	<i>66,800</i>	<i>65,100</i>	<i>0</i>	<i>0.0%</i>	<i>1,700</i>	<i>2.6%</i>
<i>Gasoline Stations (NAICS 447)</i>	<i>68,900</i>	<i>68,200</i>	<i>67,400</i>	<i>700</i>	<i>1.0%</i>	<i>1,500</i>	<i>2.2%</i>
<i>Clothing and Clothing Accessories Stores (NAICS 448)</i>	<i>113,200</i>	<i>116,900</i>	<i>109,300</i>	<i>-3,700</i>	<i>-3.2%</i>	<i>3,900</i>	<i>3.6%</i>
<i>Sporting Goods, Hobby, Book, and Music Stores (NAICS 451)</i>	<i>38,800</i>	<i>40,400</i>	<i>38,100</i>	<i>-1,600</i>	<i>-4.0%</i>	<i>700</i>	<i>1.8%</i>
<i>General Merchandise Stores (NAICS 452)</i>	<i>250,200</i>	<i>253,000</i>	<i>248,700</i>	<i>-2,800</i>	<i>-1.1%</i>	<i>1,500</i>	<i>0.6%</i>
<i>Miscellaneous Store Retailers (NAICS 453)</i>	<i>56,700</i>	<i>56,700</i>	<i>56,400</i>	<i>0</i>	<i>0.0%</i>	<i>300</i>	<i>0.5%</i>
<i>Nonstore Retailers (NAICS 454)</i>	<i>18,600</i>	<i>18,700</i>	<i>18,800</i>	<i>-100</i>	<i>-0.5%</i>	<i>-200</i>	<i>-1.1%</i>
Transportation, Warehousing, and Utilities (NAICS 48-49,22)	421,900	417,500	410,600	4,400	1.1%	11,300	2.8%
Transportation and Warehousing (NAICS 48,49)	373,300	368,900	362,700	4,400	1.2%	10,600	2.9%
<i>Air Transportation (NAICS 481)</i>	<i>59,900</i>	<i>59,800</i>	<i>60,600</i>	<i>100</i>	<i>0.2%</i>	<i>-700</i>	<i>-1.2%</i>
<i>Truck Transportation (NAICS 484)</i>	<i>109,600</i>	<i>108,200</i>	<i>102,600</i>	<i>1,400</i>	<i>1.3%</i>	<i>7,000</i>	<i>6.8%</i>
<i>Pipeline Transportation (NAICS 486)</i>	<i>15,600</i>	<i>15,500</i>	<i>15,200</i>	<i>100</i>	<i>0.7%</i>	<i>400</i>	<i>2.6%</i>
<i>Support Activities for Transportation (NAICS 488)</i>	<i>68,600</i>	<i>67,600</i>	<i>66,300</i>	<i>1,000</i>	<i>1.5%</i>	<i>2,300</i>	<i>3.5%</i>
<i>Couriers and Messengers (NAICS 492)</i>	<i>34,700</i>	<i>34,800</i>	<i>33,500</i>	<i>-100</i>	<i>-0.3%</i>	<i>1,200</i>	<i>3.6%</i>
<i>Warehousing and Storage (NAICS 493)</i>	<i>45,700</i>	<i>45,800</i>	<i>45,700</i>	<i>-100</i>	<i>-0.2%</i>	<i>0</i>	<i>0.0%</i>
Utilities (NAICS 22)	48,600	48,600	47,900	0	0.0%	700	1.5%
Information (NAICS 51)	190,100	190,300	195,900	-200	-0.1%	-5,800	-3.0%
<i>Publishing Industries (Except Internet) (NAICS 511)</i>	<i>39,900</i>	<i>39,800</i>	<i>41,200</i>	<i>100</i>	<i>0.3%</i>	<i>-1,300</i>	<i>-3.2%</i>
<i>Telecommunications (NAICS 517)</i>	<i>84,500</i>	<i>85,300</i>	<i>87,600</i>	<i>-800</i>	<i>-0.9%</i>	<i>-3,100</i>	<i>-3.5%</i>
<i>Data processing, Hosting, and Related Services (NAICS 518)</i>	<i>24,400</i>	<i>24,500</i>	<i>25,100</i>	<i>-100</i>	<i>-0.4%</i>	<i>-700</i>	<i>-2.8%</i>
Financial Activities (NAICS 52,53)	614,600	617,300	619,900	-2,700	-0.4%	-5,300	-0.9%
Finance and Insurance (NAICS 52)	448,700	451,200	450,300	-2,500	-0.6%	-1,600	-0.4%
<i>Credit Intermediation and Related Activities (NAICS 522)</i>	<i>236,600</i>	<i>237,700</i>	<i>236,900</i>	<i>-1,100</i>	<i>-0.5%</i>	<i>-300</i>	<i>-0.1%</i>
<i>Securities, Commodities Contracts, and Other Financial (NAICS 523)</i>	<i>47,300</i>	<i>47,800</i>	<i>47,500</i>	<i>-500</i>	<i>-1.1%</i>	<i>-200</i>	<i>-0.4%</i>
<i>Insurance Carriers and Related Activities (NAICS 524)</i>	<i>154,600</i>	<i>155,100</i>	<i>156,600</i>	<i>-500</i>	<i>-0.3%</i>	<i>-2,000</i>	<i>-1.3%</i>
Real Estate and Rental and Leasing (NAICS 53)	165,900	166,100	169,600	-200	-0.1%	-3,700	-2.2%
<i>Real Estate (NAICS 531)</i>	<i>113,900</i>	<i>114,200</i>	<i>116,100</i>	<i>-300</i>	<i>-0.3%</i>	<i>-2,200</i>	<i>-1.9%</i>
<i>Rental and Leasing Services (NAICS 532)</i>	<i>48,400</i>	<i>49,000</i>	<i>51,300</i>	<i>-600</i>	<i>-1.2%</i>	<i>-2,900</i>	<i>-5.7%</i>
Professional and Business Services (NAICS 54,55,56)	1,282,400	1,267,400	1,240,600	15,000	1.2%	41,800	3.4%
Professional, Scientific and Technical Services (NAICS 54)	565,000	562,900	567,500	2,100	0.4%	-2,500	-0.4%
Management of Companies and Enterprises (NAICS 55)	79,000	79,000	78,400	0	0.0%	600	0.8%
Admin and Support and Waste Mgmt and Remediation (NAICS 56)	638,400	625,500	594,700	12,900	2.1%	43,700	7.4%
<i>Administrative and Support Services (NAICS 561)</i>	<i>612,700</i>	<i>600,200</i>	<i>570,300</i>	<i>12,500</i>	<i>2.1%</i>	<i>42,400</i>	<i>7.4%</i>
Education and Health Services (NAICS 61,62)	1,414,800	1,405,500	1,364,400	9,300	0.7%	50,400	3.7%
Educational Services (NAICS 61)	158,100	152,400	155,500	5,700	3.7%	2,600	1.7%
Health Care and Social Assistance (NAICS 62)	1,256,700	1,253,100	1,208,900	3,600	0.3%	47,800	4.0%
<i>Ambulatory Health Care Services (NAICS 621)</i>	<i>598,600</i>	<i>593,400</i>	<i>568,300</i>	<i>5,200</i>	<i>0.9%</i>	<i>30,300</i>	<i>5.3%</i>
<i>Hospitals (NAICS 622)</i>	<i>292,000</i>	<i>292,600</i>	<i>288,500</i>	<i>-600</i>	<i>-0.2%</i>	<i>3,500</i>	<i>1.2%</i>
<i>Nursing and Residential Care Facilities (NAICS 623)</i>	<i>176,300</i>	<i>177,000</i>	<i>165,200</i>	<i>-700</i>	<i>-0.4%</i>	<i>11,100</i>	<i>6.7%</i>
<i>Social Assistance (NAICS 624)</i>	<i>189,800</i>	<i>190,100</i>	<i>186,900</i>	<i>-300</i>	<i>-0.2%</i>	<i>2,900</i>	<i>1.6%</i>
Leisure and Hospitality (NAICS 71,72)	994,900	981,500	971,800	13,400	1.4%	23,100	2.4%
Arts, Entertainment, and Recreation (NAICS 71)	106,500	102,800	100,500	3,700	3.6%	6,000	6.0%
<i>Amusement, Gambling, and Recreation (NAICS 713)</i>	<i>73,400</i>	<i>70,900</i>	<i>70,700</i>	<i>2,500</i>	<i>3.5%</i>	<i>2,700</i>	<i>3.8%</i>
Accommodation and Food Services (NAICS 72)	888,400	878,700	871,300	9,700	1.1%	17,100	2.0%
<i>Accommodation (NAICS 721)</i>	<i>98,100</i>	<i>97,600</i>	<i>96,200</i>	<i>500</i>	<i>0.5%</i>	<i>1,900</i>	<i>2.0%</i>
<i>Food Services and Drinking Places (NAICS 722)</i>	<i>790,300</i>	<i>781,100</i>	<i>775,100</i>	<i>9,200</i>	<i>1.2%</i>	<i>15,200</i>	<i>2.0%</i>
Other Services (NAICS 81)	359,400	360,500	355,700	-1,100	-0.3%	3,700	1.0%
<i>Repair and Maintenance (NAICS 811)</i>	<i>106,300</i>	<i>106,800</i>	<i>104,200</i>	<i>-500</i>	<i>-0.5%</i>	<i>2,100</i>	<i>2.0%</i>
<i>Personal and Laundry Services (NAICS 812)</i>	<i>92,400</i>	<i>92,600</i>	<i>91,800</i>	<i>-200</i>	<i>-0.2%</i>	<i>600</i>	<i>0.7%</i>
<i>Religious, Grantmaking, Civic, Prof Organizations (NAICS 813)</i>	<i>160,700</i>	<i>161,100</i>	<i>159,700</i>	<i>-400</i>	<i>-0.3%</i>	<i>1,000</i>	<i>0.6%</i>
Government	1,892,800	1,859,400	1,868,800	33,400	1.8%	24,000	1.3%
Federal Government	200,600	199,700	200,600	900	0.5%	0	0.0%
State Government	392,800	374,500	381,400	18,300	4.9%	11,400	3.0%
Local Government	1,299,400	1,285,200	1,286,800	14,200	1.1%	12,600	1.0%

*Estimates for the current month are preliminary. All estimates are subject to revision. The number of nonagricultural jobs in Texas is without reference to place of residence of workers. Estimates of the TWC are in cooperation with the Bureau of Labor Statistics, U.S. Department of Labor.

Metropolitan Statistical Area (MSA) Nonagricultural Wage & Salary Employment (Not Seasonally Adjusted)

Total Nonagricultural Employment in the Metropolitan Statistical Areas (MSAs) in Texas increased by 45,100 jobs in February. Government accounted for almost half of the growth with the addition of 22,400 jobs over the month, followed by Leisure and Hospitality at 13,000 jobs. The Houston-Sugar Land-Baytown MSA posted the largest numeric increase over the month with 9,600 jobs added, while the College Station-Bryan MSA registered the highest percentage growth at 2.3 percent. All of the MSAs exhibited positive annual growth rates in February, ranging from 0.5 to 5.3 percent. The Odessa MSA, the Midland MSA, and the Longview MSA posted the three highest annual growth rates, while the Sherman-Denison MSA and the San Antonio-New Braunfels MSA had the lowest rates, each at 0.5 percent.

Government employment in the MSAs grew by 22,400 jobs in February. The Dallas-Plano-Irving area accounted for the largest gains with the addition of 4,800 jobs over the month. The Houston-Sugar Land-Baytown MSA contributed 4,000 jobs to the industry growth and the Austin-Round Rock-San Marcos MSA was up 2,400 jobs over the month. The Fort Worth-Arlington area and the San Antonio-New Braunfels MSA both added over 2,000 jobs over the month. Every MSA added jobs for the month except for the Waco, the Victoria, and the San Angelo MSAs, which did not change. The highest annual percentage growth rate for the Government sector was in the McAllen-Edinburg-Mission MSA at 3.4 percent. Over the year, the MSAs added 20,100 Government jobs for a 1.2 percent annual growth rate.

Employment in Leisure and Hospitality climbed by 13,000 jobs over the month in the MSAs. This monthly gain stood in contrast to the seasonal decline of 21,200 jobs last month and was just shy of its five-year-average gain of 13,800 jobs in February. The resulting annual growth rate of 2.2 percent was the largest annual rate for a February since 2008. The College Station-Bryan MSA experienced the highest over-the-month growth rate with a 3.0 percent increase in employment, followed by the San Antonio-New Braunfels MSA with a 2.6 percent monthly growth rate, an addition of 2,500 jobs. The Beaumont-Port Arthur MSA experienced the only yearly decline in employment with a -3.5 percent annual growth rate. All remaining MSAs added jobs for the year with the exception of the Wichita

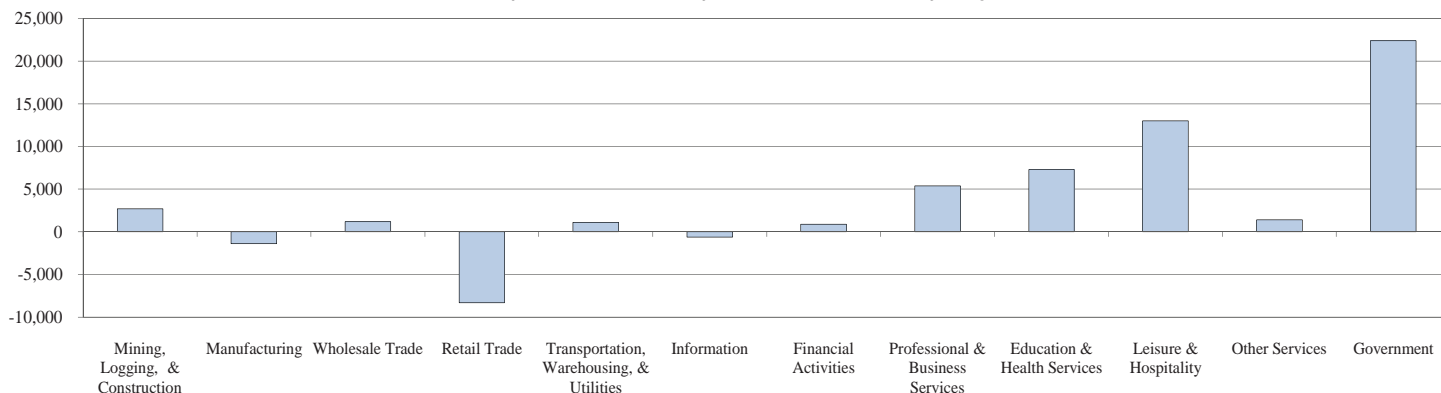
Falls, the Brownsville-Harlingen, and the Laredo MSAs, which were unchanged. Employment in Leisure and Hospitality in the Tyler MSA grew by 6.7 percent, representing the highest annual growth rate among the MSAs.

Education and Health Services employment posted an increase of 7,300 jobs in the MSAs in February. The Houston-Sugar Land-Baytown MSA was the top contributor to February's increase, adding 2,300 jobs after a revised loss of 1,300 jobs in January. Employment in Education and Health Services in the San Antonio-New Braunfels MSA increased by 1,600 jobs over the month, which was the largest monthly increase in that MSA in this industry since February 2010. A total of 44,200 jobs have been added in Education and Health Services since February 2010. The College Station-Bryan MSA logged the highest annual percentage growth rate among Texas MSAs in February at 6.7 percent, while the annual growth rate for the industry in all MSAs stood at 3.6 percent.

Mining, Logging, and Construction employment grew by 2,700 jobs, or 0.4 percent, over the month. This was the largest monthly increase for this industry since October 2010. Seven areas experienced monthly growth in February, while employment within 16 additional MSAs was unchanged over the month. The Dallas-Plano-Irving area posted the highest monthly percentage increase at 2.8 percent, followed by the College Station-Bryan MSA at 1.5 percent. Annual growth for this industry in the MSAs has climbed from 1.5 percent to 3.2 percent over the past five months.

Manufacturing employment in the MSAs decreased for the second consecutive month with the loss of 1,400 jobs. Despite this monthly drop, Manufacturing jobs in the MSAs expanded by 0.6 percent on an annual basis. The Houston-Sugar Land-Baytown MSA added the most positions in February with an increase of 700 jobs. The Amarillo and the San Antonio-New Braunfels MSAs experienced the highest monthly growth rates, growing by 0.8 percent and 0.5 percent, respectively. Over the year, more than half of the areas added employment in Manufacturing. The Odessa MSA led all MSAs in over-the-year growth with a 10.3 percent annual growth rate. The Midland MSA and the San Angelo MSA each experienced annual Manufacturing growth rates in excess of 5.0 percent.

Metropolitan Statistical Area Over-the-Month Employment Change
January 2011 to February 2011 (Not Seasonally Adjusted)



Texas Metropolitan Statistical Areas Nonagricultural Wage and Salary Employment (Not Seasonally Adjusted)

INDUSTRY	ABILENE			AMARILLO			BEAUMONT-PORT ARTHUR			BROWNSVILLE-HARLINGEN		
	Feb. '11*	Jan. '11	Feb. '10	Feb. '11*	Jan. '11	Feb. '10	Feb. '11*	Jan. '11	Feb. '10	Feb. '11*	Jan. '11	Feb. '10
TOTAL	65,000	64,700	64,300	110,700	110,000	108,200	159,200	158,400	156,800	126,400	125,800	125,200
Mining, Logging, & Construction	4,400	4,400	4,300	6,100	6,100	5,700	19,900	19,800	18,000	3,100	3,100	3,400
Manufacturing	2,800	2,800	2,900	13,100	13,000	12,900	19,800	19,800	19,000	5,300	5,300	5,700
Wholesale Trade	2,200	2,200	2,200	4,900	4,900	4,800	4,800	4,800	4,800	3,000	3,000	2,900
Retail Trade	7,900	7,900	7,900	13,600	13,700	13,300	18,900	19,000	19,400	15,700	15,800	15,400
Trans., Ware., & Util.	1,700	1,700	1,600	4,200	4,200	4,000	5,400	5,300	5,400	5,000	5,000	4,500
Information	1,000	1,000	1,100	1,500	1,500	1,600	1,400	1,400	1,600	1,900	1,900	2,000
Financial Activities	3,700	3,700	3,600	6,700	6,700	6,600	5,500	5,500	5,700	5,100	5,100	5,000
Prof. & Business Services	4,500	4,500	4,500	8,200	8,100	8,000	13,700	13,600	12,800	8,800	8,800	8,500
Educ. & Health Services	13,900	13,800	13,700	15,900	15,900	15,700	23,200	23,100	23,000	32,300	32,200	31,900
Leisure & Hospitality	6,700	6,600	6,600	11,400	11,300	10,900	13,900	13,700	14,400	11,600	11,600	11,600
Other Services	2,500	2,500	2,500	4,700	4,700	4,600	5,400	5,400	5,500	3,500	3,600	3,500
Government	13,700	13,600	13,400	20,400	19,900	20,100	27,300	27,000	27,200	31,100	30,400	30,800
	COLLEGE STATION-BRYAN			CORPUS CHRISTI			EL PASO			KILLEEN-TEMPLE-FORT HOOD		
INDUSTRY	Feb. '11*	Jan. '11	Feb. '10	Feb. '11*	Jan. '11	Feb. '10	Feb. '11*	Jan. '11	Feb. '10	Feb. '11*	Jan. '11	Feb. '10
TOTAL	98,400	96,200	96,900	179,300	177,500	176,400	279,900	278,700	274,600	128,700	127,900	126,000
Mining, Logging, & Construction	6,600	6,500	6,100	19,900	19,800	19,900	15,200	15,200	15,600	5,500	5,500	5,200
Manufacturing	5,100	5,100	5,200	9,200	9,200	9,300	16,500	16,600	16,300	7,400	7,400	7,300
Wholesale Trade	1,700	1,700	1,600	5,400	5,400	5,300	9,800	9,800	9,400	3,800	3,800	3,800
Retail Trade	10,500	10,600	9,800	20,000	20,000	19,800	33,700	33,900	32,500	14,800	14,800	14,400
Trans., Ware., & Util.	1,400	1,400	1,300	5,700	5,600	5,300	12,200	12,100	12,300	4,800	4,800	4,600
Information	1,000	1,000	1,000	2,100	2,100	2,200	4,900	4,900	5,000	2,300	2,300	2,300
Financial Activities	3,300	3,300	3,400	7,200	7,200	7,400	11,300	11,300	11,500	5,500	5,600	5,400
Prof. & Business Services	5,800	5,800	5,900	15,100	15,000	15,200	31,100	30,800	30,700	10,000	9,900	10,200
Educ. & Health Services	11,200	11,100	10,500	31,200	30,900	30,400	36,200	36,000	35,100	19,500	19,300	18,900
Leisure & Hospitality	10,200	9,900	10,100	20,600	20,100	19,800	27,600	27,000	26,800	11,900	11,800	11,600
Other Services	3,100	3,100	3,000	6,800	6,800	6,800	9,400	9,300	9,200	4,900	4,900	4,900
Government	38,500	36,700	39,000	36,100	35,400	35,000	72,000	71,800	70,200	38,300	37,800	37,400
	LAREDO			LONGVIEW			LUBBOCK			MCALLEN-EDINBURG-MISSION		
INDUSTRY	Feb. '11*	Jan. '11	Feb. '10	Feb. '11*	Jan. '11	Feb. '10	Feb. '11*	Jan. '11	Feb. '10	Feb. '11*	Jan. '11	Feb. '10
TOTAL	88,000	87,600	86,800	96,600	96,200	93,500	128,700	128,100	127,800	223,900	222,700	218,800
Mining, Logging, & Construction	3,600	3,600	3,400	14,800	14,700	13,200	5,800	5,800	5,600	8,500	8,500	8,500
Manufacturing	800	800	800	10,800	10,800	10,500	4,900	4,900	4,900	5,900	5,900	6,200
Wholesale Trade	2,600	2,600	2,600	4,200	4,200	4,100	5,900	5,900	5,900	6,100	6,100	6,100
Retail Trade	11,800	11,800	11,600	10,900	10,900	10,600	15,700	15,700	15,500	31,900	32,100	31,200
Trans., Ware., & Util.	11,300	11,300	10,900	3,600	3,600	3,700	3,500	3,500	3,500	7,000	7,000	6,800
Information	600	600	600	1,400	1,400	1,500	4,300	4,300	4,400	1,900	1,900	2,000
Financial Activities	3,900	3,900	3,900	3,800	3,800	3,800	6,900	6,900	7,000	7,900	7,900	7,900
Prof. & Business Services	6,300	6,200	5,900	8,500	8,500	8,200	9,300	9,200	9,000	13,600	13,500	13,800
Educ. & Health Services	14,600	14,500	14,000	15,200	15,100	14,800	20,500	20,300	20,100	58,200	57,800	55,700
Leisure & Hospitality	7,700	7,600	7,700	7,800	7,700	7,500	15,600	15,400	15,400	19,500	19,300	19,300
Other Services	2,300	2,300	2,200	3,200	3,200	3,100	5,200	5,200	5,100	5,800	5,800	5,600
Government	22,500	22,400	23,200	12,400	12,300	12,500	31,100	31,000	31,400	57,600	56,900	55,700
	MIDLAND			ODESSA			SAN ANGELO			SHERMAN-DENISON		
INDUSTRY	Feb. '11*	Jan. '11	Feb. '10	Feb. '11*	Jan. '11	Feb. '10	Feb. '11*	Jan. '11	Feb. '10	Feb. '11*	Jan. '11	Feb. '10
TOTAL	68,900	68,500	66,200	61,700	61,200	58,600	44,600	44,300	43,900	42,100	42,000	41,900
Mining, Logging, & Construction	16,000	15,900	14,200	12,100	12,100	10,700	3,200	3,200	2,900	2,300	2,300	2,200
Manufacturing	2,600	2,600	2,400	4,300	4,300	3,900	3,600	3,600	3,400	5,100	5,100	5,000
Wholesale Trade	3,500	3,500	3,300	4,500	4,500	4,300	1,500	1,500	1,600	1,100	1,100	1,100
Retail Trade	7,400	7,400	7,400	6,300	6,300	6,300	5,400	5,400	5,300	5,700	5,800	5,800
Trans., Ware., & Util.	2,500	2,500	2,400	2,100	2,100	1,900	1,000	1,000	900	1,100	1,100	1,100
Information	1,100	1,100	1,200	600	600	600	1,100	1,100	1,200	400	400	500
Financial Activities	3,300	3,300	3,200	2,600	2,600	2,600	2,000	2,000	2,100	2,600	2,600	2,600
Prof. & Business Services	7,400	7,300	7,000	4,200	4,100	3,900	3,400	3,300	3,300	2,500	2,500	2,300
Educ. & Health Services	7,200	7,200	6,900	5,900	5,900	5,800	7,700	7,600	7,600	8,800	8,700	9,000
Leisure & Hospitality	6,800	6,700	6,600	6,000	5,900	5,700	4,700	4,600	4,600	4,600	4,500	4,400
Other Services	2,800	2,800	2,700	3,100	3,100	2,900	1,800	1,800	1,800	1,400	1,500	1,400
Government	8,300	8,200	8,900	10,000	9,700	10,000	9,200	9,200	9,200	6,500	6,400	6,500
	TEXARKANA			TYLER			VICTORIA			WACO		
INDUSTRY	Feb. '11*	Jan. '11	Feb. '10	Feb. '11*	Jan. '11	Feb. '10	Feb. '11*	Jan. '11	Feb. '10	Feb. '11*	Jan. '11	Feb. '10
TOTAL	57,000	56,500	55,600	92,800	92,300	90,800	49,000	48,800	48,200	105,100	104,700	103,500
Mining, Logging, & Construction	2,300	2,300	2,000	5,700	5,700	5,500	6,800	6,800	6,300	6,200	6,200	6,200
Manufacturing	4,000	4,000	4,000	6,400	6,400	6,500	5,500	5,500	5,500	14,300	14,300	14,200
Wholesale Trade	2,500	2,500	2,400	3,100	3,100	3,100	1,600	1,600	1,600	3,700	3,700	3,800
Retail Trade	6,900	6,900	6,900	11,500	11,500	11,400	6,300	6,300	6,200	10,300	10,300	10,300
Trans., Ware., & Util.	3,000	2,900	2,900	3,600	3,500	3,500	1,400	1,400	1,400	2,900	2,900	2,800
Information	600	600	600	2,000	2,000	2,000	500	500	500	1,200	1,200	1,300
Financial Activities	2,500	2,500	2,500	4,000	4,000	4,000	2,100	2,100	2,100	6,200	6,200	6,200
Prof. & Business Services	4,200	4,100	3,800	8,700	8,700	8,300	2,700	2,600	2,600	8,300	8,200	8,100
Educ. & Health Services	9,200	9,200	9,100	21,200	21,100	20,400	7,500	7,400	7,200	20,400	20,300	19,800
Leisure & Hospitality	5,500	5,400	5,300	9,500	9,300	8,900	4,000	4,000	3,900	9,600	9,400	9,200
Other Services	2,200	2,200	2,100	3,800	3,800	3,700	1,700	1,700	1,700	3,800	3,800	3,900
Government	14,100	13,900	14,000	13,300	13,200	13,500	8,900	8,900	9,200	18,200	18,200	17,700
	WICHITA FALLS											
INDUSTRY	Feb. '11*	Jan. '11	Feb. '10									
TOTAL	57,900	57,600	57,300									
Mining, Logging, & Construction	3,700	3,700	3,500									
Manufacturing	5,100	5,100	5,000									
Wholesale Trade	1,800	1,800	1,700									
Retail Trade	7,500	7,500	7,500									
Trans., Ware., & Util.	1,900	1,900	1,800									
Information	1,100	1,100	1,200									
Financial Activities	2,700	2,700	2,700									
Prof. & Business Services	3,600	3,600	3,100									
Educ. & Health Services	9,400	9,300	9,400									
Leisure & Hospitality	5,900	5,800	5,900									
Other Services	2,600	2,600	2,600									
Government	12,600	12,500	12,900									

Estimates for the current month are preliminary. All estimates are subject to revision. The number of nonagricultural jobs in each MSA is without reference to place of residence of workers. Estimates of the TWC are in cooperation with the Bureau of Labor Statistics (BLS), U.S. Department of Labor (DOL).

Highlights of the Texas Labor Force (Not Seasonally Adjusted)

The Texas unemployment rate decreased three-tenths of a percentage point to 8.2 percent. The January-to-February change was the lowest seen since 2008. The unemployment rate was two-tenths of a percentage point lower over the year. The national unemployment rate moved in tandem with the Texas unemployment rate, declining three-tenths of a percentage point for a rate of 9.5 percent. The Texas unemployment rate has remained below the national unemployment rate for 44 consecutive months.

The Civilian Labor Force added 1,800 persons in February with the level estimated at 12,152,400 Texans. This was recorded as the highest Civilian Labor Force level seen for February, yet was the lowest February monthly increase recorded in this series. The Civilian Labor Force expanded by 128,500 individuals since February 2010.

The number of employed Texans grew by 44,800 in February, adding the most Texans into the employed population since 2002. The current estimate for Texas was 11,159,900 workers. Since February 2010, the number of jobholders expanded by 143,800 persons. At an estimated level of 992,500 individuals, the unemployed population contracted by 43,000 persons, which was the largest January-to-February drop in the unemployment series. From year-ago levels, the number of unemployed decreased by 15,300 individuals.

Those persons continuing to receive unemployment benefits in Texas declined by 9,800 for a total of 151,300 claimants. In the Metropolitan Statistical Areas (MSAs), 22 MSAs declined and three increased in the number of those seeking unemployment benefits. The Killen-Temple-Fort Hood MSA, the Waco MSA, and the Victoria MSA experienced an increased demand for unemployment benefits for February by 9.5 percent, 3.6 percent, and 2.4 percent, respectively.

The unemployment rate fell in all 25 MSAs. The McAllen-Edinburg-Mission and the Beaumont-Port Arthur MSAs tied for the largest over-the-month unemployment rate drop among the MSAs at six-tenths of a percentage point for rates of 12.2 percent and 11.0 percent, respectively. The Midland MSA unemployment rate was the lowest among the MSAs at 4.8 percent.

MSAs Ranked by Unemployment Rate February 2011 (Not Seasonally Adjusted)

1	Midland	4.8
2	Amarillo	5.5
3	Lubbock	6.1
4	College Station-Bryan	6.2
5	San Angelo	6.4
6	Abilene	6.5
7	Odessa	6.6
8	Austin-Round Rock-San Marcos	6.9
9	Longview	7.0
10	Wichita Falls	7.3
11	Victoria	7.4
12 (tie)	San Antonio-New Braunfels	7.5
	Texarkana	7.5
	Waco	7.5
15	Tyler	7.8
16	Killeen-Temple-Fort Hood	8.0
17	Dallas-Fort Worth-Arlington	8.1
	Texas	8.2
18	Corpus Christi	8.2
19 (tie)	Houston-Sugar Land-Baytown	8.4
	Laredo	8.4
21	Sherman-Denison	8.5
	United States	9.5
22	El Paso	10.1
23	Beaumont-Port Arthur	11.0
24	Brownsville-Harlingen	12.1
25	McAllen-Edinburg-Mission	12.2

Civilian Labor Force Estimates for Texas Metropolitan Statistical Areas Not Seasonally Adjusted (In Thousands)

	February 2011				January 2010				February 2010			
	C.L.F.	Emp.	Unemp.	Rate	C.L.F.	Emp.	Unemp.	Rate	C.L.F.	Emp.	Unemp.	Rate
United States	152,635.0	138,093.0	14,542.0	9.5	152,536.0	137,599.0	14,937.0	9.8	153,194.0	137,203.0	15,991.0	10.4
State of Texas	12,152.4	11,159.9	992.5	8.2	12,150.6	11,115.1	1,035.5	8.5	12,023.9	11,016.1	1,007.8	8.4
Abilene	83.2	77.8	5.4	6.5	82.9	77.3	5.6	6.7	83.0	77.6	5.4	6.5
Amarillo	132.5	125.2	7.3	5.5	132.1	124.4	7.7	5.8	130.6	123.1	7.5	5.8
Austin-Round Rock-San Marcos	906.7	844.0	62.7	6.9	904.1	838.3	65.8	7.3	900.3	834.2	66.1	7.3
Beaumont-Port Arthur	189.0	168.1	20.9	11.0	189.5	167.5	22.0	11.6	186.2	166.4	19.8	10.6
Brownsville-Harlingen	159.7	140.4	19.3	12.1	159.3	139.4	19.9	12.5	157.0	139.5	17.5	11.2
College Station-Bryan	116.2	109.0	7.2	6.2	114.2	106.7	7.5	6.6	115.0	107.9	7.1	6.2
Corpus Christi	213.3	195.8	17.5	8.2	212.9	194.4	18.5	8.7	211.0	194.2	16.8	8.0
Dallas-Fort Worth-Arlington	3,224.3	2,962.0	262.3	8.1	3,222.6	2,949.9	272.7	8.5	3,176.0	2,905.4	270.6	8.5
Dallas-Plano-Irving MD	2,158.9	1,982.7	176.2	8.2	2,157.1	1,974.1	183.0	8.5	2,117.5	1,936.8	180.7	8.5
Fort Worth-Arlington MD	1,065.3	979.2	86.1	8.1	1,065.4	975.8	89.6	8.4	1,058.6	968.6	90.0	8.5
El Paso	322.2	289.7	32.5	10.1	321.8	288.4	33.4	10.4	315.1	285.5	29.6	9.4
Houston-Sugar Land-Baytown	2,904.3	2,660.9	243.4	8.4	2,906.6	2,652.2	254.4	8.8	2,867.0	2,620.3	246.7	8.6
Killeen-Temple-Fort Hood	169.5	156.0	13.5	8.0	168.4	154.8	13.6	8.1	165.4	153.2	12.2	7.4
Laredo	95.5	87.5	8.0	8.4	95.5	87.2	8.3	8.7	95.7	86.9	8.8	9.2
Longview	112.0	104.1	7.9	7.0	112.0	103.8	8.2	7.3	110.0	101.4	8.6	7.9
Lubbock	146.2	137.3	8.9	6.1	146.0	136.7	9.3	6.4	145.9	136.9	9.0	6.2
McAllen-Edinburg-Mission	311.6	273.7	37.9	12.2	312.7	272.7	40.0	12.8	306.1	269.7	36.4	11.9
Midland	77.6	73.9	3.7	4.8	77.4	73.5	3.9	5.0	75.5	71.2	4.3	5.7
Odessa	73.2	68.4	4.8	6.6	73.1	68.0	5.1	7.0	71.4	65.3	6.1	8.6
San Angelo	54.9	51.4	3.5	6.4	55.0	51.3	3.7	6.7	54.4	50.8	3.6	6.6
San Antonio-New Braunfels	983.9	910.6	73.3	7.5	982.1	905.3	76.8	7.8	982.2	910.1	72.1	7.3
Sherman-Denison	57.0	52.2	4.8	8.5	57.1	52.1	5.0	8.8	57.0	52.0	5.0	8.7
Texarkana	65.6	60.7	4.9	7.5	65.1	60.0	5.1	7.8	64.7	59.5	5.2	8.1
Tyler	101.4	93.5	7.9	7.8	101.7	93.3	8.4	8.2	100.5	92.2	8.3	8.2
Victoria	58.7	54.4	4.3	7.4	58.7	54.2	4.5	7.6	58.7	53.9	4.8	8.2
Waco	115.4	106.7	8.7	7.5	115.4	106.5	8.9	7.7	114.0	105.7	8.3	7.3
Wichita Falls	72.1	66.9	5.2	7.3	72.3	66.7	5.6	7.7	72.5	66.6	5.9	8.1

All estimates are subject to revision. Estimates reflect actual (not seasonally adjusted) data. Civilian Labor Force (C.L.F.) includes wage and salary workers, self-employed, unpaid family, domestics in private households, agricultural workers, workers involved in labor disputes and the unemployed, all by place of residence. Employment and Unemployment data are first rounded then added together to derive the rounded CLF total. Because of this rounding technique, this rounded total of the CLF may not agree with a rounding of the CLF total itself. Percent Unemployed is based upon unrounded Labor Force, Employment and Unemployment numbers. Estimates of the TWC are in cooperation with the Bureau of Labor Statistics, U.S. Department of Labor. Beginning with January 2005 estimates, definitions of the MSAs were updated to reflect the 2000 Census-based configurations. Please see www.tracer2.com for details on these changes. The Dallas-Fort Worth-Arlington MSA is comprised of the Dallas-Plano-Irving Metropolitan Division (MD) and the Fort Worth-Arlington MD.

Employment and Unemployment Estimates for Texas Counties - February 2011

County	CLF	Emp.	Unemp.	Rate	County	CLF	Emp.	Unemp.	Rate	County	CLF	Emp.	Unemp.	Rate
Anderson	20,910	18,892	2,018	9.7	Gillespie	13,432	12,767	665	5.0	Moore	11,563	11,010	553	4.8
Andrews	7,057	6,666	391	5.5	Glasscock	588	557	31	5.3	Morris	6,150	5,413	737	12.0
Angelina	39,697	36,588	3,109	7.8	Goliad	3,393	3,168	225	6.6	Motley	657	612	45	6.8
Aransas	11,900	10,921	979	8.2	Gonzales	9,797	9,181	616	6.3	Nacogdoches	31,870	29,751	2,119	6.6
Archer	4,944	4,688	256	5.2	Gray	10,601	9,860	741	7.0	Navarro	21,743	19,594	2,149	9.9
Armstrong	1,064	1,021	43	4.0	Grayson	57,048	52,203	4,845	8.5	Newton	5,813	5,003	810	13.9
Atascosa	19,765	18,160	1,605	8.1	Gregg	66,831	62,308	4,523	6.8	Nolan	7,772	7,234	538	6.9
Austin	13,629	12,408	1,221	9.0	Grimes	11,865	10,896	969	8.2	Nueces	169,928	156,519	13,409	7.9
Bailey	3,224	2,982	242	7.5	Guadalupe	61,156	56,751	4,405	7.2	Ochiltree	5,518	5,266	252	4.6
Bandera	9,979	9,269	710	7.1	Hale	17,332	16,035	1,297	7.5	Oldham	911	856	55	6.0
Bastrop	35,108	32,260	2,848	8.1	Hall	1,340	1,213	127	9.5	Orange	42,444	37,661	4,783	11.3
Baylor	1,766	1,654	112	6.3	Hamilton	4,400	4,136	264	6.0	Palo Pinto	13,986	12,879	1,107	7.9
Bee	12,481	11,352	1,129	9.0	Hansford	2,696	2,568	128	4.7	Panola	14,002	13,049	953	6.8
Bell	133,176	122,642	10,534	7.9	Hardeman	2,183	2,044	139	6.4	Parker	55,017	50,820	4,197	7.6
Bexar	778,225	719,639	58,586	7.5	Hardin	27,668	25,122	2,546	9.2	Parmer	4,592	4,376	216	4.7
Blanco	5,004	4,707	297	5.9	Harris	2,015,198	1,846,224	168,974	8.4	Pecos	9,599	9,065	534	5.6
Borden	454	430	24	5.3	Harrison	32,649	29,935	2,714	8.3	Polk	18,381	16,509	1,872	10.2
Bosque	8,185	7,457	728	8.9	Hartley	2,423	2,290	133	5.5	Potter	58,259	54,604	3,655	6.3
Bowie	45,357	41,626	3,731	8.2	Haskell	2,995	2,847	148	4.9	Presidio	3,892	3,261	631	16.2
Brazoria	149,499	136,084	13,415	9.0	Hays	81,213	75,446	5,767	7.1	Rains	5,108	4,661	447	8.8
Brazos	100,261	94,284	5,977	6.0	Hemphill	2,521	2,445	76	3.0	Randall	69,979	66,517	3,462	4.9
Brewster	5,322	5,015	307	5.8	Henderson	35,921	32,833	3,088	8.6	Reagan	2,547	2,456	91	3.6
Briscoe	651	614	37	5.7	Hidalgo	311,528	273,662	37,866	12.2	Real	1,514	1,420	94	6.2
Brooks	3,136	2,848	288	9.2	Hill	16,082	14,715	1,367	8.5	Red River	5,794	5,107	687	11.9
Brown	18,414	17,052	1,362	7.4	Hockley	12,237	11,487	750	6.1	Reeves	4,788	4,324	464	9.7
Burleson	8,374	7,826	548	6.5	Hood	26,335	24,336	1,999	7.6	Refugio	4,208	3,935	273	6.5
Burnet	22,178	20,720	1,458	6.6	Hopkins	17,753	16,485	1,268	7.1	Roberts	555	528	27	4.9
Caldwell	16,147	14,759	1,388	8.6	Houston	8,461	7,611	850	10.0	Robertson	7,535	6,868	667	8.9
Calhoun	9,622	8,693	929	9.7	Howard	13,878	12,912	966	7.0	Rockwall	40,510	37,317	3,193	7.9
Callahan	7,125	6,676	449	6.3	Hudspeth	1,805	1,702	103	5.7	Runnels	4,511	4,140	371	8.2
Cameron	159,611	140,353	19,258	12.1	Hunt	37,538	34,178	3,360	9.0	Rusk	24,862	23,093	1,769	7.1
Camp	5,993	5,471	522	8.7	Hutchinson	11,225	10,357	868	7.7	Sabine	3,518	2,935	583	16.6
Carson	3,277	3,096	181	5.5	Irion	940	892	48	5.1	San Augustine	3,774	3,315	459	12.2
Cass	13,419	11,952	1,467	10.9	Jack	5,016	4,718	298	5.9	San Jacinto	10,460	9,318	1,142	10.9
Castro	3,522	3,318	204	5.8	Jackson	6,780	6,312	468	6.9	San Patricio	31,488	28,385	3,103	9.9
Chambers	15,550	14,137	1,413	9.1	Jasper	15,779	13,860	1,919	12.2	San Saba	2,187	2,002	185	8.5
Cherokee	20,416	18,585	1,831	9.0	Jeff Davis	1,176	1,107	69	5.9	Schleicher	1,473	1,364	109	7.4
Childress	3,159	2,929	230	7.3	Jefferson	118,900	105,363	13,537	11.4	Scurry	8,026	7,564	462	5.8
Clay	6,021	5,636	385	6.4	Jim Hogg	2,926	2,710	216	7.4	Shackelford	2,219	2,118	101	4.6
Cochran	1,341	1,213	128	9.5	Jim Wells	21,023	19,396	1,627	7.7	Shelby	12,897	11,804	1,093	8.5
Coke	1,350	1,240	110	8.1	Johnson	75,280	69,277	6,003	8.0	Sherman	1,419	1,353	66	4.7
Coleman	4,282	3,994	288	6.7	Jones	7,760	7,169	591	7.6	Smith	101,361	93,474	7,887	7.8
Collin	424,504	393,368	31,136	7.3	Karnes	5,457	4,986	471	8.6	Somervell	4,276	3,923	353	8.3
Collingsworth	1,363	1,281	82	6.0	Kaufman	48,252	43,950	4,302	8.9	Starr	26,030	21,057	4,973	19.1
Colorado	10,219	9,426	793	7.8	Kendall	16,967	15,927	1,040	6.1	Stephens	4,646	4,249	397	8.5
Comal	58,342	54,303	4,039	6.9	Kenedy	232	225	7	3.0	Sterling	731	692	39	5.3
Comanche	6,685	6,230	455	6.8	Kent	422	395	27	6.4	Stonewall	769	730	39	5.1
Concho	1,246	1,146	100	8.0	Kerr	22,963	21,503	1,460	6.4	Sutton	2,935	2,787	148	5.0
Cooke	21,743	20,414	1,329	6.1	Kimble	1,924	1,781	143	7.4	Swisher	3,488	3,255	233	6.7
Coryell	25,318	23,078	2,240	8.8	King	175	162	13	7.4	Tarrant	906,840	833,168	73,672	8.1
Cottle	720	674	46	6.4	Kinney	1,480	1,338	142	9.6	Taylor	68,360	64,002	4,358	6.4
Crane	1,549	1,415	134	8.7	Kleberg	17,379	16,160	1,219	7.0	Terrell	363	327	36	9.9
Crockett	2,000	1,887	113	5.7	Knox	1,729	1,619	110	6.4	Terry	5,675	5,251	424	7.5
Crosby	2,695	2,413	282	10.5	Lamar	23,813	21,487	2,326	9.8	Throckmorton	1,032	975	57	5.5
Culberson	1,665	1,581	84	5.0	Lamb	6,729	6,215	514	7.6	Titus	14,576	13,468	1,108	7.6
Dallam	3,662	3,485	177	4.8	Lampasas	10,941	10,234	707	6.5	Tom Green	53,988	50,535	3,453	6.4
Dallas	1,173,503	1,072,195	101,308	8.6	La Salle	3,145	2,909	236	7.5	Travis	559,906	522,555	37,351	6.7
Dawson	5,291	4,851	440	8.3	Lavaca	9,763	9,177	586	6.0	Trinity	5,824	5,302	522	9.0
Deaf Smith	9,077	8,540	537	5.9	Lee	9,220	8,619	601	6.5	Tyler	8,589	7,673	916	10.7
Delta	2,337	2,105	232	9.9	Leon	8,221	7,592	629	7.7	Upshur	20,319	18,745	1,574	7.7
Denton	359,376	332,883	26,493	7.4	Liberty	32,288	28,635	3,653	11.3	Upton	1,871	1,786	85	4.5
DeWitt	9,216	8,523	693	7.5	Limestone	11,950	11,128	822	6.9	Uvalde	11,486	10,371	1,115	9.7
Dickens	954	790	164	17.2	Lipscomb	1,566	1,488	78	5.0	Val Verde	21,067	19,058	2,009	9.5
Dimmit	4,179	3,782	397	9.5	Live Oak	5,271	4,955	316	6.0	Van Zandt	25,526	23,583	1,943	7.6
Donley	1,922	1,804	118	6.1	Llano	7,881	7,262	619	7.9	Victoria	45,665	42,489	3,176	7.0
Duval	5,311	4,738	573	10.8	Loving	46	42	4	8.7	Walker	28,098	25,957	2,141	7.6
Eastland	8,772	8,108	664	7.6	Lubbock	143,519	134,877	8,642	6.0	Waller	16,746	15,284	1,462	8.7
Ector	73,260	68,415	4,845	6.6	Lynn	2,743	2,548	195	7.1	Ward	4,895	4,536	359	7.3
Edwards	966	896	70	7.2	McCulloch	3,878	3,629	249	6.4	Washington	16,850	15,834	1,016	6.0
Ellis	72,888	66,740	6,148	8.4	McLennan	115,379	106,682	8,697	7.5	Webb	95,486	87,462	8,024	8.4
El Paso	322,205	289,657	32,548	10.1	McMullen	369	345	24	6.5	Wharton	20,755	18,967	1,788	8.6
Erath	19,381	18,200	1,181	6.1	Madison	5,599	5,158	441	7.9	Wheeler	3,194	3,063	131	4.1
Falls	6,610	5,964	646	9.8	Marion	5,059	4,583	476	9.4	Wichita	61,162	56,571	4,591	7.5
Fannin	13,874	12,527	1,347	9.7	Martin	2,220	2,090	130	5.9	Wilbarger	7,773	7,311	462	5.9
Fayette	11,846	11,129	717	6.1	Mason	2,323	2,202	121	5.2	Willacy	9,524	8,273	1,251	13.1
Fisher	1,970	1,839	131	6.6	Matagorda	18,093	15,952	2,141	11.8	Williamson	214,344	199,016	15,328	7.2
Floyd	3,020	2,720	300	9.9	Maverick	23,873	19,782	4,091	17.1	Wilson	19,263	17,853	1,410	7.3
Foard	701	644	57	8.1	Medina	20,274	18,741	1,533	7.6	Winkler	3,285	3,048	237	7.2
Fort Bend	282,586	260,435	22,151	7.8	Menard	1,000	928	72	7.2	Wise	28,193	25,971	2,222	7.9
Franklin	5,319	4,915	404	7.6	Midland	77,583	73,880	3,703	4.8	Wood	17,971	16,445	1,526	8.5
Freestone	10,295	9,613	682	6.6	Milam	10,752	9,608	1,144	10.6	Yoakum	3,908	3,686	222	5.7
Frio	7,770	7,190	580	7.5	Mills	2,258	2,110	148	6.6	Young	9,622	8,970	652	6.8
Gaines	6,862	6,462	400	5.8	Mitchell	3,582	3,299	283	7.9	Zapata	5,736	5,156	580	10.1
Galveston	143,655	130,641	13,014	9.1	Montague	10,171	9,501	670	6.6	Zavala	4,038	3,349	689	17.1
Garza	2,476	2,336	140	5.7	Montgomery	224,705	207,708	16,997	7.6	Texas (Actual)	12,152,422	11,159,899	992,523	8.2

Estimates reflect actual (not seasonally adjusted) data. All estimates are subject to revision. Estimates of the TWC are in cooperation with the Bureau of Labor Statistics, U.S. Department of Labor.

Employment and Unemployment Estimates for Texas Cities - February 2011

City	CLF	Emp.	Unemp	Rate	City	CLF	Emp.	Unemp	Rate	City	CLF	Emp.	Unemp	Rate
Abilene	59,239	55,361	3,878	6.5	Garland	109,780	100,231	9,549	8.7	Paris	11,853	10,632	1,221	10.3
Allen	43,829	40,827	3,002	6.8	Georgetown	22,679	21,046	1,633	7.2	Pasadena	66,578	59,983	6,595	9.9
Amarillo	102,106	96,577	5,529	5.4	Grand Prairie	79,248	72,277	6,971	8.8	Pearland	46,714	43,457	3,257	7.0
Arlington	205,090	189,462	15,628	7.6	Grapevine	29,063	27,181	1,882	6.5	Pflugerville	23,450	22,147	1,303	5.6
Austin	432,049	404,533	27,516	6.4	Greenville	11,261	10,246	1,015	9.0	Pharr	26,693	23,966	2,727	10.2
Baytown	33,216	29,181	4,035	12.1	Haltom City	20,941	19,210	1,731	8.3	Plano	147,935	137,467	10,468	7.1
Beaumont	55,964	50,582	5,382	9.6	Harker Heights City	12,500	11,651	849	6.8	Port Arthur	25,440	21,253	4,187	16.5
Bedford	30,516	28,296	2,220	7.3	Harlingen	26,990	24,492	2,498	9.3	Richardson	55,151	51,235	3,916	7.1
Big Spring	9,538	8,805	733	7.7	Houston	1,075,803	988,666	87,137	8.1	Rockwall	19,086	17,733	1,353	7.1
Brownsville	69,662	60,777	8,885	12.8	Huntsville	16,291	15,084	1,207	7.4	Rosenberg	16,226	14,830	1,396	8.6
Bryan	41,085	38,603	2,482	6.0	Hurst	20,752	19,157	1,595	7.7	Round Rock	54,200	50,606	3,594	6.6
Burleson	18,620	17,319	1,301	7.0	Irving	111,408	102,697	8,711	7.8	Rowlett	29,131	26,849	2,282	7.8
Carrollton	72,173	66,838	5,335	7.4	Keller	20,530	19,190	1,340	6.5	San Angelo	45,468	42,548	2,920	6.4
Cedar Hill	23,840	21,724	2,116	8.9	Killeen	51,044	46,635	4,409	8.6	San Antonio	642,419	597,330	45,089	7.0
Cedar Park	33,088	31,188	1,900	5.7	Kingsville	13,818	12,898	920	6.7	San Benito	9,900	8,886	1,014	10.2
Cleburne	13,327	12,285	1,042	7.8	Kyle City	13,212	12,480	732	5.5	San Juan	14,069	12,311	1,758	12.5
College Station	47,800	45,054	2,746	5.7	Lake Jackson	14,289	13,114	1,175	8.2	San Marcos	28,325	26,683	1,642	5.8
Conroe	28,209	26,372	1,837	6.5	Lancaster	17,074	15,256	1,818	10.6	Schertz	16,267	15,291	976	6.0
Coppell	20,356	19,036	1,320	6.5	La Porte	18,414	16,796	1,618	8.8	Seguin	12,051	11,150	901	7.5
Copperas Cove	13,748	12,738	1,010	7.3	Laredo	90,609	83,392	7,217	8.0	Sherman	17,520	16,099	1,421	8.1
Corpus Christi	152,644	141,210	11,434	7.5	League City	39,481	36,357	3,124	7.9	Socorro	12,529	11,031	1,498	12.0
Corsicana	10,981	9,828	1,153	10.5	Leander City	12,988	12,247	741	5.7	Southlake	12,478	11,665	813	6.5
Dallas	602,612	550,832	51,780	8.6	Lewisville	60,948	56,957	3,991	6.5	Sugar Land	42,315	39,746	2,569	6.1
Deer Park	16,843	15,463	1,380	8.2	Little Elm	13,301	12,549	752	5.7	Temple	32,124	29,940	2,184	6.8
Del Rio	16,589	15,084	1,505	9.1	Longview	42,666	39,724	2,942	6.9	Texarkana	17,291	15,901	1,390	8.0
Denton	64,782	60,647	4,135	6.4	Lubbock	120,409	113,357	7,052	5.9	Texas City	20,084	17,967	2,117	10.5
DeSoto	25,565	23,107	2,458	9.6	Lufkin	16,341	15,061	1,280	7.8	The Colony	24,199	22,415	1,784	7.4
Duncanville	18,347	16,683	1,664	9.1	McAllen	63,708	58,732	4,976	7.8	Tyler	48,958	45,365	3,593	7.3
Eagle Pass	13,973	11,371	2,602	18.6	McKinney	62,363	57,639	4,724	7.6	University Park	10,703	9,982	721	6.7
Edinburg	33,496	30,603	2,893	8.6	Mansfield	25,234	23,392	1,842	7.3	Victoria	32,883	30,604	2,279	6.9
El Paso	273,966	248,654	25,312	9.2	Mesquite	69,376	63,280	6,096	8.8	Waco	57,204	52,673	4,531	7.9
Eules	31,380	29,094	2,286	7.3	Midland	63,836	60,847	2,989	4.7	Waxahachie	13,658	12,576	1,082	7.9
Farmers Branch	13,840	12,802	1,038	7.5	Mission	29,069	26,254	2,815	9.7	Weatherford	12,773	11,807	966	7.6
Flower Mound	36,229	33,916	2,313	6.4	Missouri City	41,078	38,000	3,078	7.5	Weslaco	14,650	12,980	1,670	11.4
Fort Worth	336,707	308,704	28,003	8.3	Nacogdoches	16,803	15,643	1,160	6.9	Wichita Falls	46,442	42,878	3,564	7.7
Friendswood	17,891	16,614	1,277	7.1	New Braunfels	28,253	26,446	1,807	6.4	Wylie	20,468	18,967	1,501	7.3
Frisco	54,687	50,872	3,815	7.0	North Richland Hills	36,444	33,785	2,659	7.3					
Galveston	25,657	23,435	2,222	8.7	Odessa	54,986	51,470	3,516	6.4					

Estimates reflect actual (not seasonally adjusted) data. All estimates are subject to revision. Estimates of the TWC are in cooperation with the Bureau of Labor Statistics, U.S. Department of Labor.

Civilian Labor Force Estimates for WDAs				
February 2011				
	CLF	Emp.	Unemp.	Rate
Alamo	1,033,593	957,089	76,504	7.4
Brazos Valley	158,705	148,458	10,247	6.5
Cameron County	159,611	140,353	19,258	12.1
Capital Area	559,906	522,555	37,351	6.7
Central Texas	189,032	173,810	15,222	8.1
Coastal Bend	282,726	259,779	22,947	8.1
Concho Valley	76,335	71,539	4,796	6.3
Dallas	1,173,503	1,072,195	101,308	8.6
Deep East Texas	165,063	149,669	15,394	9.3
East Texas	396,928	365,657	31,271	7.9
Golden Crescent	94,236	87,543	6,693	7.1
Gulf Coast	2,971,021	2,721,858	249,163	8.4
Heart Of Texas	168,501	155,559	12,942	7.7
Lower Rio Grande Valley	347,082	302,992	44,090	12.7
Middle Rio Grande	71,748	62,905	8,843	12.3
North Central Texas	1,227,279	1,133,436	93,843	7.6
North East Texas	134,518	122,558	11,960	8.9
North Texas	110,079	102,411	7,668	7.0
Panhandle	219,547	207,137	12,410	5.7
Permian Basin	213,589	200,806	12,783	6.0
Rural Capital	402,941	373,918	29,023	7.2
South East Texas	189,012	168,146	20,866	11.0
South Plains	206,685	193,327	13,358	6.5
South Texas	104,148	95,328	8,820	8.5
Tarrant County	906,840	833,168	73,672	8.1
Texoma	92,665	85,144	7,521	8.1
Upper Rio Grande	336,065	302,323	33,742	10.0
West Central Texas	161,071	150,240	10,831	6.7

Average Hours and Earnings of Production or Nonsupervisory Workers for Texas									
Industry	Average Weekly Earnings			Average Weekly Hours			Average Hourly Earnings		
	Feb. '11	Jan. '11	Feb. '10	Feb. '11	Jan. '11	Feb. '10	Feb. '11	Jan. '11	Feb. '10
Mining and Logging	\$725.76	\$726.33	\$615.30	42.0	42.5	36.8	\$17.28	\$17.09	\$16.72
<i>Mining</i>	\$743.83	\$746.93	\$684.11	42.7	43.3	40.1	\$17.42	\$17.25	\$17.06
Manufacturing	\$587.42	\$611.94	\$585.40	40.4	42.0	40.4	\$14.54	\$14.57	\$14.49
<i>Durable Goods</i>	\$584.22	\$597.98	\$572.15	41.2	42.5	41.4	\$14.18	\$14.07	\$13.82
<i>Fabricated Metal Product Mfg</i>	\$634.38	\$648.07	\$579.60	44.3	45.8	42.0	\$14.32	\$14.15	\$13.80
<i>Non-Durable Goods</i>	\$595.17	\$636.81	\$609.46	38.9	40.9	38.5	\$15.30	\$15.57	\$15.83
Trade, Transportation, and Utilities									
<i>Wholesale Trade</i>	\$627.74	\$640.20	\$621.91	38.3	39.3	38.7	\$16.39	\$16.29	\$16.07
<i>Machinery, Equipment, and Supplies</i>	\$566.68	\$579.96	\$555.35	39.6	40.5	38.7	\$14.31	\$14.32	\$14.35
<i>Retail Trade</i>									
<i>Motor Vehicle and Parts Dealers</i>	\$650.62	\$650.33	\$655.08	39.1	39.2	38.9	\$16.64	\$16.59	\$16.84
<i>Bldg. Material and Garden Equipment</i>	\$405.24	\$405.60	\$444.27	33.0	33.8	38.2	\$12.28	\$12.00	\$11.63
<i>Food and Beverage Stores</i>	\$320.42	\$314.15	\$321.28	31.2	30.5	32.0	\$10.27	\$10.30	\$10.04
<i>Gasoline Stations</i>	\$337.22	\$345.47	\$353.25	35.2	35.8	37.5	\$9.58	\$9.65	\$9.42
<i>Clothing and Accessories Stores</i>	\$212.59	\$199.40	\$206.24	20.5	19.1	20.2	\$10.37	\$10.44	\$10.21
Information									
<i>Telecommunications</i>	\$647.15	\$656.97	\$611.15	35.0	35.9	34.2	\$18.49	\$18.30	\$17.87

Estimates of the TWC are in cooperation with the Bureau of Labor Statistics, U.S. Department of Labor. Estimates reflect actual (not seasonally adjusted) data. All estimates are subject to revision.

GLOSSARY OF LABOR MARKET TERMS

Actual or Not Seasonally Adjusted - This term is used to describe data series not subject to the seasonal adjustment process. In other words, the effects of regular, or seasonal, patterns have not been removed from these series.

Civilian Labor Force (CLF) - Is that portion of the population age 16 and older who are employed or unemployed. To be considered unemployed, a person has to be not working but willing and able to work and actively seeking work.

Consumer Price Index (CPI) - Is a measure of the average change over time in the prices paid by urban consumers for a market basket of consumer goods and services. The CPI provides a way for consumers to compare what the market basket of goods and services costs this month with what the same market basket cost a month or a year ago.

Current Employment Statistics (CES) - A monthly survey of nonfarm business establishments used to collect wage and salary employment, workers hours, and payroll, by industry and area. It is sometimes known as Nonagricultural Employment.

Employed (Emp) - Persons 16 years and over in the civilian noninstitutional population who, during the reference week, (a) did any work at all (at least 1 hour) as paid employees, worked in their own business, profession, or on their own farm, or worked 15 hours or more as unpaid workers in an enterprise operated by a member of the family, and (b) all those who were not working but who had jobs or businesses from which they were temporarily absent because of vacation, illness, bad weather, childcare problems, maternity or paternity leave, labor-management dispute, job training, or other family or personal reasons, whether or not they were paid for the time off or were seeking other jobs. Each employed person is counted only once, even if he or she holds more than one job.

Local Area Unemployment Statistics (LAUS) - The Federal/State cooperative program which produces employment and unemployment

estimates for states and local areas. These estimates are developed by State Employment Security Agencies in accordance with Bureau of Labor Statistics (BLS) definitions and procedures. Data is used for planning and budgetary purposes as an indication of need for employment and training services programs. Estimates are also used to allocate Federal funds.

Metropolitan Division (MD) - A Metropolitan Statistical Area which contains a single core with a population of 2.5 million or more may be subdivided into smaller groupings of counties referred to as Metropolitan Divisions. Titles of Metropolitan Divisions are typically based on principal city names. Texas has two Metropolitan Divisions, the Dallas-Plano-Irving MD and the Fort Worth-Arlington MD, which combine to form the Dallas-Fort Worth-Arlington MSA.

Metropolitan Statistical Area (MSA) - A geographic area that contains at least one urbanized area of 50,000 or more population plus adjacent territory that has a high degree of social and economic integration with the core urban area. An MSA in Texas is made up of one or more counties. The U.S. Office of Management and Budget defines metropolitan areas according to published standards that are applied to Census Bureau data. Texas has 25 MSAs and two Metropolitan Divisions (MD).

Seasonally Adjusted (SA) - Seasonal adjustment removes the effects of events that follow a more or less regular pattern each year. These adjustments make it easier to observe the cyclical and other non-seasonal movements in a data series.

Unemployed (Unemp) - Persons 16 years and over who had no employment during the reference week, were available for work, except for temporary illness, and had made specific efforts to find employment sometime during the 4-week period ending with the reference week. Persons who were waiting to be recalled to a job from which they had been laid off need not have been looking for work to be classified as unemployed.

“HAPPENINGS AROUND THE STATE”

Jobs Boom in Eagle Ford Shale

San Antonio, TX (San Antonio Express-News--Vicki Vaughan)—Development of the Eagle Ford shale, a vast oil and gas region, shows promise of being the most important economic generator South Texas has ever seen, a recently released study indicates. Since the first well was drilled in the Eagle Ford in 2008 until 2010, oil and gas drilling has directly supported about 6,800 full-time jobs in the region and generated almost \$2.1 billion in total economic output. When other spinoff jobs were included in the tally, the numbers jumped to 12,600 jobs, \$512 million in salaries, and \$2.9 billion in economic output.

Drilling jobs account for about half of the jobs so far in the Eagle Ford and the jobs pay well, starting from about \$12 to \$17 an hour for roustabouts and \$13 to \$18 an hour for truck drivers. The Eagle Ford accounts for about six percent of the gross regional product for the 24-county area in the study. The numbers come from a study by the University of Texas at San Antonio (UTSA). The Eagle Ford “is a very early play, so these are very conservative estimates,” said UTSA’s Dominique Halaby.

Healthcare Center to Open

EL PASO, TX (El Paso Times--Ramon Bracamontes)—TRISUN Healthcare, a national nursing home company, is set to open a new facility in El Paso. The care center will be located in northeast El Paso and will employ about 150 people full-time, officials said. “We are excited to extend the growth of our health-care services to El Paso with the opening of this beautiful new facility,” said James Hardee, chief operating officer of TRISUN Healthcare.

TRISUN Healthcare is an Austin-based company that manages skilled nursing, rehab, and assisted living centers throughout Texas. The Northeast center will include physical and occupational therapy, speech and language pathology, hospice care, a spiritual care program, pharmacy services, social services, recreational activities, and wireless Internet.

Cibolo Gains Oil-Field Service Company

SAN ANTONIO, TX (San Antonio Express-News)—The city of Cibolo will be the new location of the U.S. arm of Canadian oil-field service company, Sanjel (USA) Inc. Sanjel’s new district office will be the city’s largest employer, officials said. The Denver-based company plans to hire “several hundred” workers for the Cibolo office. Those workers will support Sanjel’s oil-field service operations in the Eagle Ford shale play of South Texas. Sanjel (USA) Vice President Danny Jimenez said, “We are excited to open our newest district office and proud to be a future member of the Cibolo business community.”

Cirrus Logic to Add Jobs

AUSTIN, TX (Austin American-Statesman--Kirk Ladendorf)—Austin semiconductor maker Cirrus Logic Inc. reported a 47 percent rise in third quarter revenue thanks to stronger than expected sales of audio chips. The company also said it expects to hire up to 150 new workers, most of them chip engineers and most of them based in Austin, over the next 12 to 15 months. The company employs 375 workers in Austin and 549 workers worldwide. CEO Jason Rhode said, “We believe we will continue to grow at a faster rate than the semiconductor industry as a whole.”

INDICATORS

Texas Unemployment Rate

Actual (Not Seasonally Adjusted)			Seasonally Adjusted		
FEB	2011	8.2%	FEB	2011	8.2%
JAN	2011	8.5%	JAN	2011	8.3%
FEB	2010	8.4%	FEB	2010	8.2%

U.S. Unemployment Rate

Actual (Not Seasonally Adjusted)			Seasonally Adjusted		
FEB	2011	9.5%	FEB	2011	8.9%
JAN	2011	9.8%	JAN	2011	9.0%
FEB	2010	10.4%	FEB	2010	9.7%

Texas Nonagricultural Wage & Salary Employment

Not Seasonally Adjusted			Seasonally Adjusted		
FEB	2011	10,408,300	FEB	2011	10,493,700
JAN	2011	10,342,600	JAN	2011	10,471,000
FEB	2010	10,178,300	FEB	2010	10,239,500
OTM Change		65,700	OTM Change		22,700
OTY Change		230,000	OTY Change		254,200

Unemployment Insurance Claims Filed

Initial Claims			Continued Claims		
FEB	2011	69,540	FEB	2011	795,729
JAN	2011	98,517	JAN	2011	960,319
FEB	2010	86,282	FEB	2010	1,020,691

Consumer Price Index (CPI)

Annual Change				Personnel Supply		
U.S.	FEB	2011	2.1%	FEB	2011	231,800
Dallas-Fort Worth	JAN	2011	0.5%	JAN	2011	221,100
Houston-Galveston	FEB	2011	2.5%	FEB	2010	199,100
				OTM Change		10,700
				OTY Change		32,700

West Texas Intermediate Crude Oil (\$/barrel)

FEB	2011	\$ 89.58	OTM Change	\$ 0.16
JAN	2011	\$ 89.42	OTY Change	\$ 13.16
FEB	2010	\$ 76.42		

Texas Labor Market Review Labor Market & Career Information



The Texas Labor Market Review (TLMR) is published monthly by the Labor Market & Career Information Department of the Texas Workforce Commission. Material in the TLMR is not copyrighted and may be reproduced. The TWC would appreciate credit for the material used and a copy of the reprint. For assistance in finding this publication on our website, please contact us at the numbers below.

Phone (512) 936-3278 Toll Free 1-866-938-4444
 Fax (512) 936-3208
 Website www.tracer2.com
 E-mail lmci@twc.state.tx.us

You can view the TLMR on-line by going to www.tracer2.com and selecting "LMI Publications".

Richard Froeschle, LMCI Director

TLMR Staff:

Veronica Sanchez Downey, Editor

Rachel Tello Sanchez, Layout and Design

Contributors: Richard Adame, Phil Arnold, Cynthia Brewer, Honor Byrd, Spencer Franklin, Mike Guzman, David Jesus, Nathan Jones, Robert Luttner, Vincent Lyons, Ander Mitchell, Monica Moguel, Becky Parker, Mariana Vega.

Equal Opportunity Employer/Programs. Auxiliary aids and services are available, on request, to individuals with disabilities.

Contact Relay Texas @ 7-1-1



PROCEDURAL CHANGES FOR CURRENT EMPLOYMENT STATISTICS (CES) ESTIMATES

With the production of preliminary estimates for March 2011, the responsibility for the estimation of State and metropolitan statistical area (MSA) data for the CES Total Nonagricultural Wage and Salary Employment series will transition from the Texas Workforce Commission (TWC) to the Bureau of Labor Statistics (BLS).

TWC will continue to provide the BLS with information on local events that may impact the estimates, such as strikes or large layoffs at businesses not covered by the survey. In addition, TWC will disseminate and analyze the CES estimates for local data users.

Concurrent with this transition, the BLS will implement several methodological changes to standardize the estimation approach across States. This may increase the month-to-month variability of the estimates. More detailed information on the changes to procedures for producing CES estimates will be available on the BLS website at <http://www.bls.gov/sae/cesprocs.htm>. Estimates produced by the BLS will continue to utilize an improved outlier identification procedure. Further information on the estimators is available at <http://www.bls.gov/opub/hom/homch2.htm>.

UNEMPLOYMENT RATES BY MSA FEBRUARY 2011

